

# INSTALLATION INSTRUCTIONS FOR REAR-MOUNT KING WINCH MODELS 158RM, 83RM, 85RM, 86RM & 815RM FOR ALL JEEPS

1. Unpack winch assembly and check all parts according to the bill of materials.
2. Remove the four bolts supporting the outer end of the draw bar and the lower two center bolts.
3. Set the winch and mounting in position with worm shaft projecting through hole in rear cross member. Bolt in place using four 3/8 x 2-1/4 capscrews and two 7/16 x 2-1/4 capscrews. Insert four 5/8 x 1-3/4 capscrews through the feet of the mounting and the bottom of the draw bar. Tighten all bolts.
4. (For 158RM Only) Slip JRM10 coupling on the worm shaft and tighten setscrew. Install Jeep center P.T.O. Connect Jeep universal joint shaft to coupling. Unbolt the rubber bumpers on the frame above the rear axle and reinstall using the J140 spacer blocks and 3/8 x 3 capscrews.
5. (83RM, 85RM, 86RM and 815RM Only) Remove cover plate on rear of transfer case. Clean mounting flange. Cut hole in floor for lever if there is no existing hole. Mount Model 10 Power Take-Off. Bolt flange type universal joint to rear flange of P.T.O. Slip rear U-joint on winch, being sure to get 3/16" keyway on winch. Put key in shaft and insert in universal joint. On CJ6 Only - slip bearing on shaft and bolt to cross member above rear axle. Slip into other universal joint and center the shaft in the universal joints. Tighten all setscrews in universal joints. (It is recommended that the shaft be spot drilled with a 5/16" drill at the setscrew's location.
6. Install the winch cable. It is advised to place the coil of cable on a rotating drum or stand to prevent kinking. If this is not available, unwind the coil of cable by rolling it along the shop floor. Insert the end opposite the hook through the 4-way rollers in the bumpers and through the hole in winch drum until the end is approximately 6" above the winch drum flange. Remove one of the 3/8" x 7/8" capscrews holding the cable clamp to winch drum, loosen the other 3/8" x 7/8" capscrew until it is almost out of the winch drum. Pull the cable under the clamp back through the hole in winch drum until the end of cable is even with the top of the cable clamp. Tighten the capscrews in cable clamp. Cut off the capscrews smooth with inside of winch drum with a sharp chisel or hack saw.
7. Grease all zerex fittings on the winch with chassis lubricant. Oil the winch drum clutch and shafting mechanism with lubricating oil. Check the oil in winch housing. If low, fill to 1" below plug level with EP140 gear oil or equal.
8. Wind cable on top of winch drum. Care should be taken to wind the cable evenly and as tightly as possible. If enough room is available, attach the hook to a solid anchor, pull the emergency brake slightly, and wind the cable on the drum by allowing the winch to pull the vehicle across the shop floor. After all the cable is on the drum, place the hook on the bumper flange. Disengage the drum clutch by pulling upon the drum clutch lever. (Part 199). The drag brake will prevent the cable from unwinding.

## BILL OF MATERIAL

1	King Winch in 158-26 mounting
1	15312 - 150' coil 5/16" cable with hook
2	J140 Spacer Blocks (158RM only)
1	JRM-10 Coupling (158RM only)
1	Model 10 P.T.O. (83RM, 85RM, 86RM only)
	Model FJ-10 P.T.O. (815RM only)
1	Shaft (44" on 85RM and 815RM, 64" on 86RM)
	(40 1/2" on 83RM)
1	86-14 Bearing (86RM only)
1	RM390 7/8-1/4 x flange universal joint
	(all but 158RM)

## BOLTS

4	5/8 NF x 1-3/4 Capscrews w/nuts and lockwashers
2	7/16 NF x 2-1/4 Capscrews w/nuts and lockwashers
4	3/8 NF x 1-3/4 Capscrews w/nuts and lockwashers
4	3/8 NF x 3 Capscrews w/nuts and lockwashers (158RM only)

## ADDITIONAL BOLTS FOR 83RM, 85RM, 86RM & 815 RM

5	3/8 NC x 1 Capscrews	2	#15 Woodruff Keys
5	3/8 Lockwashers	4	3/8 NC x 3/8 Set Screws
4	5/16 NF x 7/8 Capscrews, nuts and	1	1/2 NF x 1-1/2 Capscrews w/nuts



- 1 AF-1 Anchor adjustment bar
- 2 AF-2 Anchor bar
- 1 AF-3 Forward angle iron
- 1 AF-4 LH Support
- 1 AF-5 RH Support
- 2 AF-6 Stiff Legs
- 1 AF-7 Crossmember reinforcement
- 2 AF-8 1/2" NF x 1-1/2 capscrews  
w/nuts and lockwashers

- 2 AF-9 Pin for stiff legs
- 1 AF-10 Sheave
- 1 AF-11 Sheave pin

BOLTS

- 3 1/2" NF x 1-1/2" Capscrews with nuts  
and lockwashers
- 2 1/2" NF x 1-1/4" Capscrews with nuts  
and lockwashers

INSTALLATION INSTRUCTIONS FOR AO65 "A" FRAME

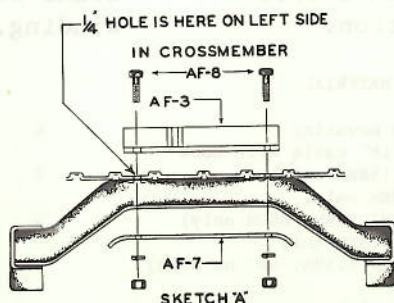
1. There is a 1/4" hole on the left of the rear cross member. With a 1/4" drill, drill through this hole and up through the body. From top side ream this hole to 1/2". Bolt angle iron in place in body with reinforcement on underside of rear crossmember, using this 1/2" hole. (See sketch "A")
2. Drill 1/2" hole in other side of crossmember and body, using hole in reinforcement as a guide. Insert bolts.
3. The "A" frame may now be bolted in place with the two tubular legs bolted to the platform, and the center anchor bar bolted to the angle iron in the body.
4. Insert the stiff legs in the tubes at the side of the winch mounting and lock with enclosed pins.

OPERATING INSTRUCTIONS

1. After the winch has been properly installed, as per installation instructions, be sure that it is properly lubricated by using EP140 gear oil in the winch housing and chassis lubricant in all grease fittings.

2. When the winch is to be used for the first time, be sure that the drum clutch lever is in the UP position which assures that the drum clutch is disengaged. Pull the cable out and attach the anchor.
3. Engage the drum clutch by pulling out the pin on the bracket (Part No. 197) which will release the drum clutch, thereby engaging with the drum. Should this not take place, rotate the drum slightly by hand until the pins enter the slots in the drum clutch.
4. As this model winch is driven from the center Power Take-Off on the transfer case, all the operating is done from the driver's seat. Shift the transfer case lever to neutral. Then the regular gear shift lever of the transmission and Jeep clutch are used to operate the winch in the identical manner in which the Jeep is driven, that is, to depress the Jeep clutch and shift to low, second or high for pulling in the cable, or to reverse so as to let the cable out and then smoothly engaging the Jeep clutch by releasing the clutch pedal.

NOTE: The 199 lever must be in the UP position whenever the winch is not in use.

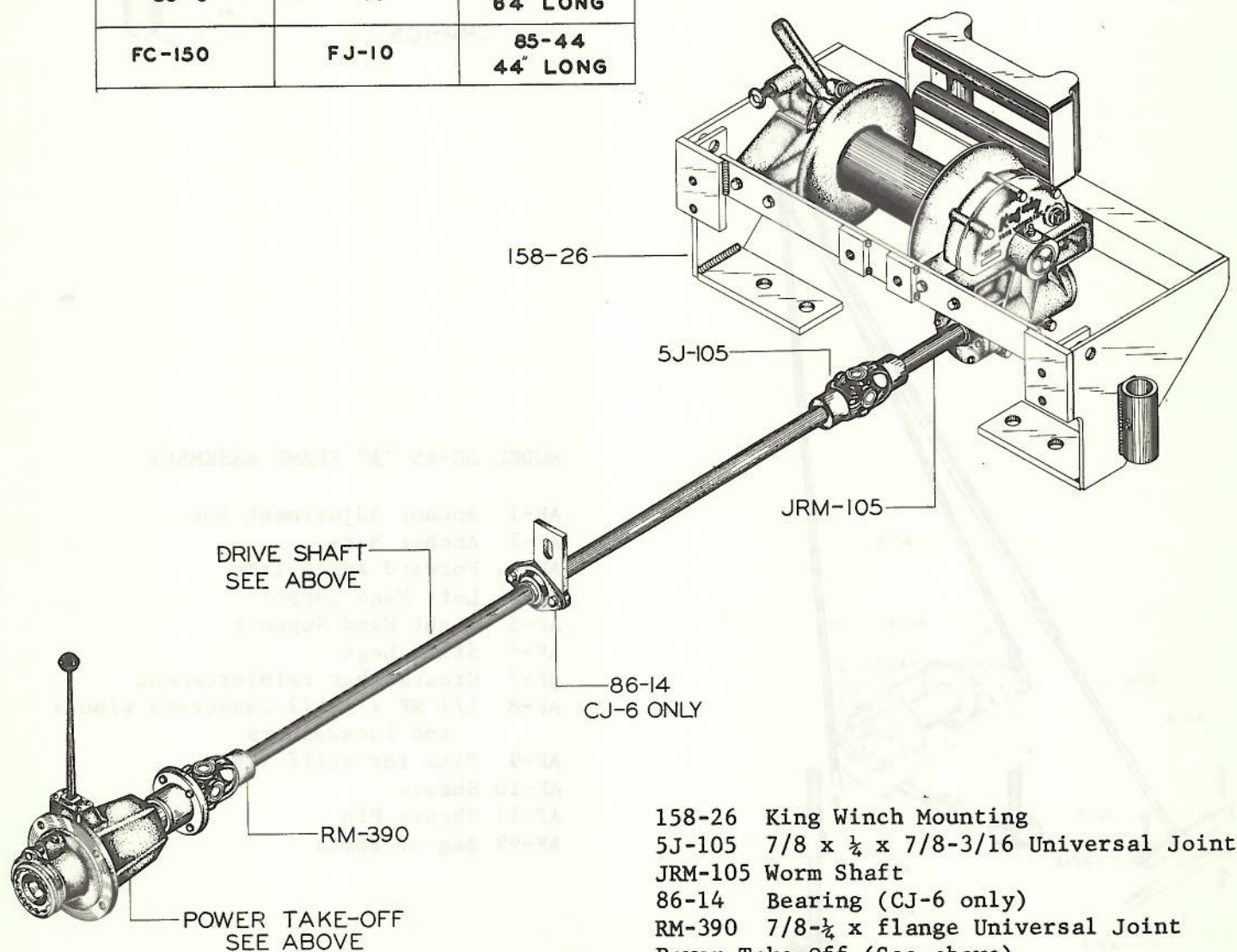


**Koznis** IRON WORKS, inc.



MODELS 83RM, 85RM, 86RM and 815RM  
KING WINCH PARTS

VEHICLE	POWER TAKE-OFF	SHAFT
CJ-2A CJ-3A CJ-3B	10	83-40 40½" LONG
CJ-5	10	85-44 44" LONG
CJ-6	10	86-64 64" LONG
FC-150	FJ-10	85-44 44" LONG

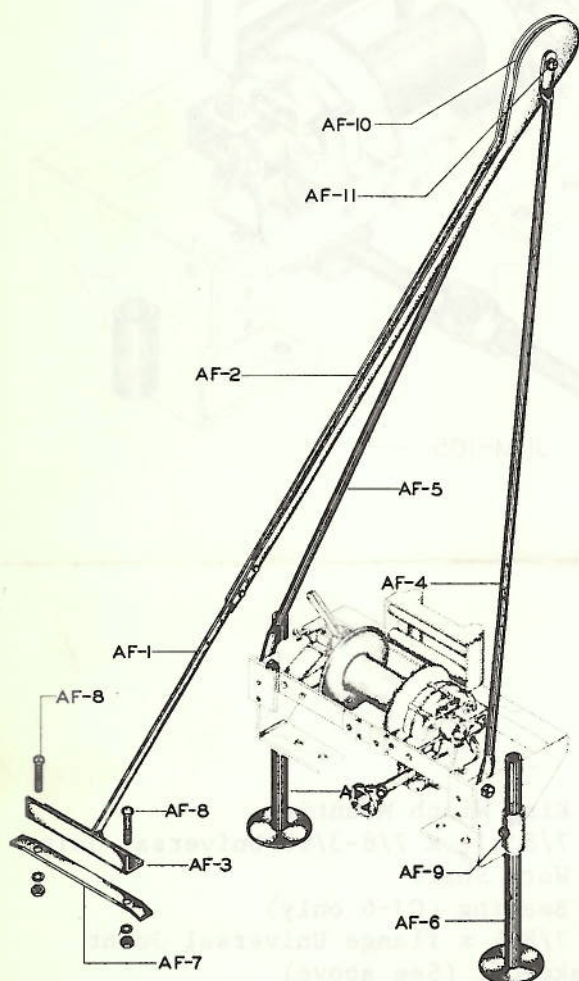
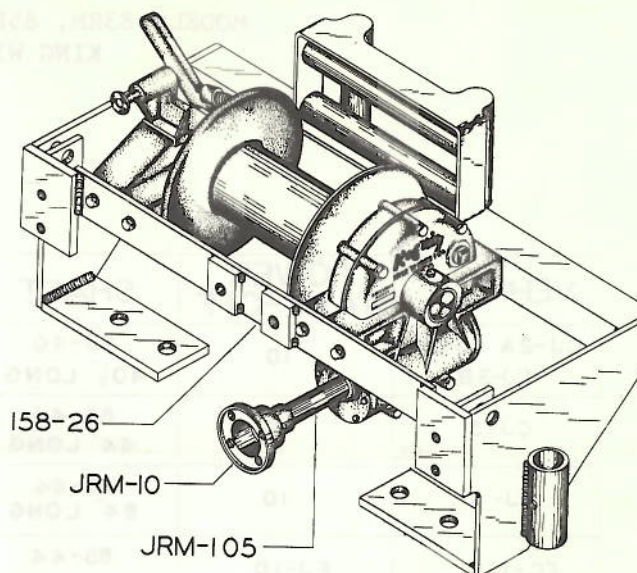


- 158-26 King Winch Mounting
- 5J-105 7/8 x 1/2 x 7/8-3/16 Universal Joint
- JRM-105 Worm Shaft
- 86-14 Bearing (CJ-6 only)
- RM-390 7/8-1/2 x flange Universal Joint
- Power Take-Off (See above)
- Drive Shaft (See above)
- RM-99 Bag of Bolts

**Koenig** IRON WORKS, inc.

# MODEL 158RM KING WINCH PARTS

158-26 King Winch Mounting  
 JRM-10 Flange Coupling  
 JRM-105 Worm Shaft  
 158-99 Bag of Bolts



# MODEL AO-65 "A" FRAME ASSEMBLY

AF-1 Anchor Adjustment Bar  
 AF-2 Anchor Bars  
 AF-3 Forward Angle Iron  
 AF-4 Left Hand Support  
 AF-5 Right Hand Support  
 AF-6 Stiff Legs  
 AF-7 Crossmember reinforcement  
 AF-8 1/2 NF x 1-1/2 Capscrews w/nuts  
 and lockwashers  
 AF-9 Pins for stiff legs  
 AF-10 Sheave  
 AF-11 Sheave Pin  
 AF-99 Bag of Bolts

**Koenig** IRON WORKS, inc.