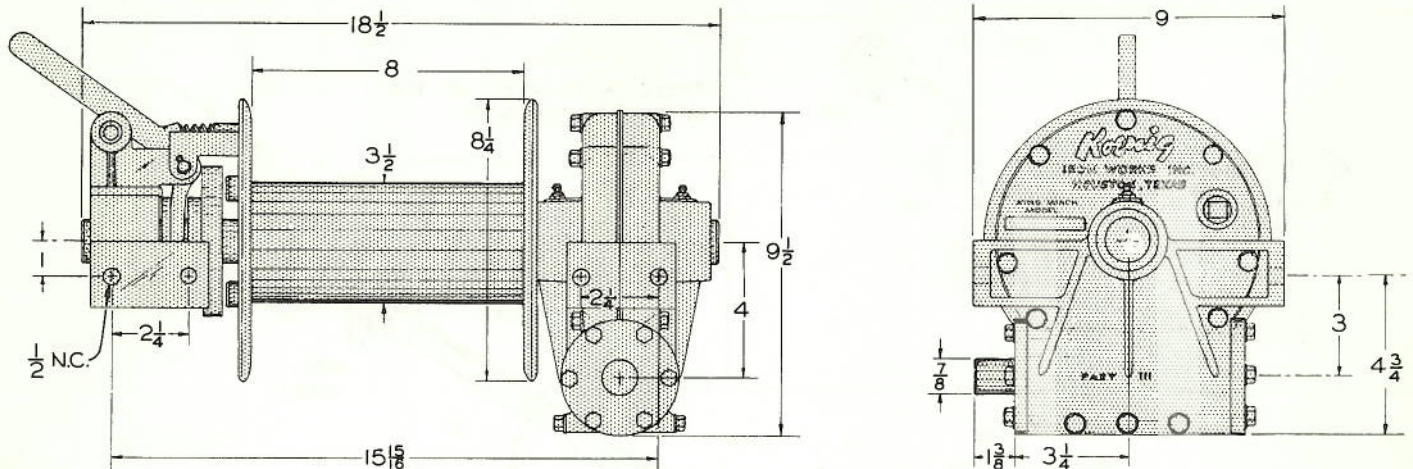


MODEL C-100 KING WINCH



Features of the Model C-100 KING Winch

Light weight — Housings are die cast, high tensile strength, silicon aluminum.

- Virtually indestructible cable drum . . . fabricated from seamless steel tubing and stamped steel flanges. Drum is free-spooling by means of forged steel clutch.
- Dependable long wearing gearing . . . steel worm mated with bronze ring gear mounted on forged steel spider, running on bronze bearings and Timken thrust bearings.
- High strength shafting . . . worm and drum shafts of stress-relieved, ground and polished Stress-proof steel.

Recommended Cable Size — 7/16" 6 x 9 plow steel, hemp center.

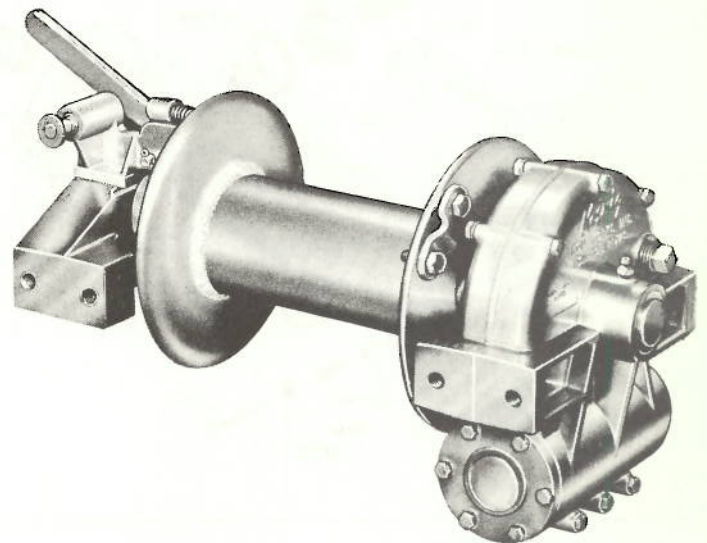
Drum Capacity — 150' 5/16" cable.

Pulling Capacity — 8,000 lbs.

Max. Hoisting Capacity — 1,500 lbs. on single line.

All mounting holes 1/2" NC

Winch Weight — 47 lbs.



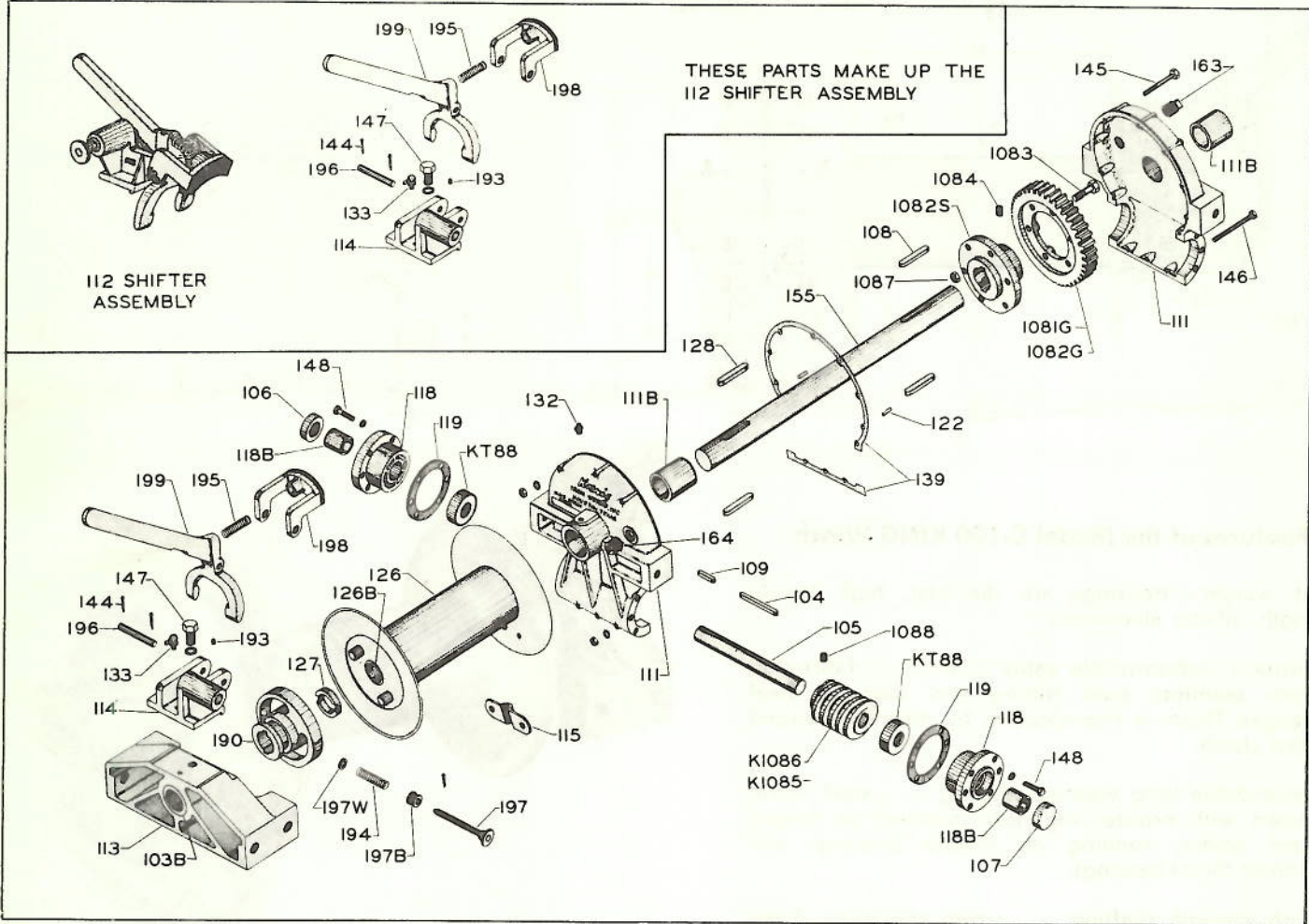
Specifications of Model C-100 Winch

Gear Ratios Available	9:1	18:1	36:1	48:1
Left Hand or Right Hand				
Pulling Capacity	8000	8000	8000	6500
Safe Hoisting Capacity	NIL	NIL	1500	1500
Cable Speed F.P.M. Per 1000 R.P.M. Input	100	50	25	19
(1st Layer of Cable on Drum)				

Uses of Model C-100 KING Winch — This winch was designed primarily as a front mount automotive winch, and can be supplied in complete installations for Willys, International Harvester, Ford, Chevrolet, GMC, Dodge and other vehicles, and has also found use on tractors, boats, electric and gasoline driven hoists and elevators, pipe bending machines, soil testing rigs, and many other uses.

Koenig IRON WORKS, inc.

MODEL C-100 KING WINCH PARTS



Part No.	Description	Part No.	Description
103B	Bushing	146	Housing Bolt (3 Req'd.)
104	Worm Key	147	Shifter Bracket Bolt
105	Worm Shaft	148	Bearing Holder Bolt (12 Req'd.)
106	Oil Seal	155	Drum Shaft w/Keys
107	Plug	163	Grease Plug
108	Spider Key (2 Req'd.)	164	Countersunk Grease Plug
109	Worm Shaft Key	190	Drum Clutch
111	Housing w/Bushing (2 Req'd.)	193	Set Screw for 197
111B	Bushing (2 Req'd.)	194	Spring
112	Shifter Assembly (See note on drawing)	195	Brake Spring
113	Drum Shaft Bracket	196	Pin
114	Shifter Bracket	197	Pin
115	Cable Clamp	197B	Bushing
118	Bearing Holder w/Bushing (2 Req'd.)	197W	Washer
118B	Bushing (2 Req'd.)	198	Brake Shoe
119	Gasket (4 Req'd.)	199	Shifter Lever
122	Dowel Pin (2 Req'd.)	KT88	Thrust Bearing (2 Req'd.)
126	Drum w/Bushings	1081G	Right Hand Gear
126B	Bushings (2 Req'd.)	1082G	Left Hand Gear
127	Drum Set Collar	1082S	Spider
128	Clutch Key (2 Req'd.)	1083	Bolt (6 Req'd.)
132	Zert Fitting (2 Req'd.)	1084	Set Screw for Spider
133	Zert Fitting	K1085	Right Hand Worm
139	Gasket (2 Pieces)	K1086	Left Hand Worm
144	Cotter Pin (3 Req'd.)	1087	Lock Nut (6 Req'd.)
145	Housing Bolt (7 Req'd.)	1088	Set Screw for Worm

Koenig IRON WORKS, inc.

KING WINCHES

<u>Model</u>		<u>Gear Ratio</u>	<u>Pulling Capacity</u>	<u>List</u>
100	36:1	8000 lbs.	107.50
100	48:1	6000	127.50
100	18:1	8000	127.50
100	9:1	8000	127.50
100	with Timken Bearings	36:1	8000 lbs.	114.00
100	" " "	48:1	6000	134.00
100	" " "	18:1	8000	134.00
100	" " "	9:1	8000	134.00
C-100	36:1	8000 lbs.	107.50
C-100	48:1	6000	127.50
C-100	18:1	8000	127.50
C-100	9:1	8000	127.50
C-100	with Timken Bearings	36:1	8000 lbs.	114.00
C-100	" " "	48:1	6000	134.00
C-100	" " "	18:1	8000	134.00
C-100	" " "	9:1	8000	134.00
R-100	with Timken Bearings	36:1	8000 lbs.	197.50
R-100	" " "	48:1	6000	217.50
R-100	" " "	18:1	8000	217.50
R-100	" " "	9:1	8000	217.50
120	with Timken Bearings	24:1	15000 lbs.	198.00
120	" " "	32:1	15000	222.00
120	" " "	8:1	15000	210.00
125	with Timken Bearings	24:1	19000 lbs.	198.00
125	" " "	32:1	19000	222.00
125	" " "	8:1	19000	210.00
U-120	with Timken Bearings	24:1	15000 lbs.	198.00
U-120	" " "	32:1	15000	222.00
U-120	" " "	8:1	15000	210.00
U-125	with Timken Bearings	24:1	19000 lbs.	198.00
U-125	" " "	32:1	19000	222.00
U-125	" " "	8:1	19000	210.00

Koenig IRON WORKS, inc.

Price List 579
Revised
March 2, 1959

FRICITION DRUM KING WINCHES

<u>Model</u>		<u>Gear Ratio</u>	<u>Pulling Capacity</u>	<u>List</u>
100	Friction clutch drum, drum brake and levers mounted on platform.	36:1	1200 lbs.	328.00
100	Friction clutch drum, drum brake and levers mounted on platform.	48:1	1200	348.00
100	Friction clutch drum, drum brake and levers mounted on platform.	18:1	1200	348.00
100	Friction clutch drum, drum brake and levers mounted on platform.	9:1	1200	348.00

NOTE: All gear ratios are available either Right-Hand or Left-Hand.

On "Winch Only" orders we would supply the first gear ratio shown for each winch model. We would also supply LEFT-HAND worm and gear unless RIGHT-HAND worm and gear is specified. (EXAMPLE - Model 100 - 36:1 ratio LEFT-HAND worm and gear)

KING HAND WINCH

<u>Model</u>		<u>Gear Ratio</u>	<u>Hoisting Capacity</u>	<u>List</u>
GH5		5:1	500 lbs.	29.75

Koenig IRON WORKS, inc.