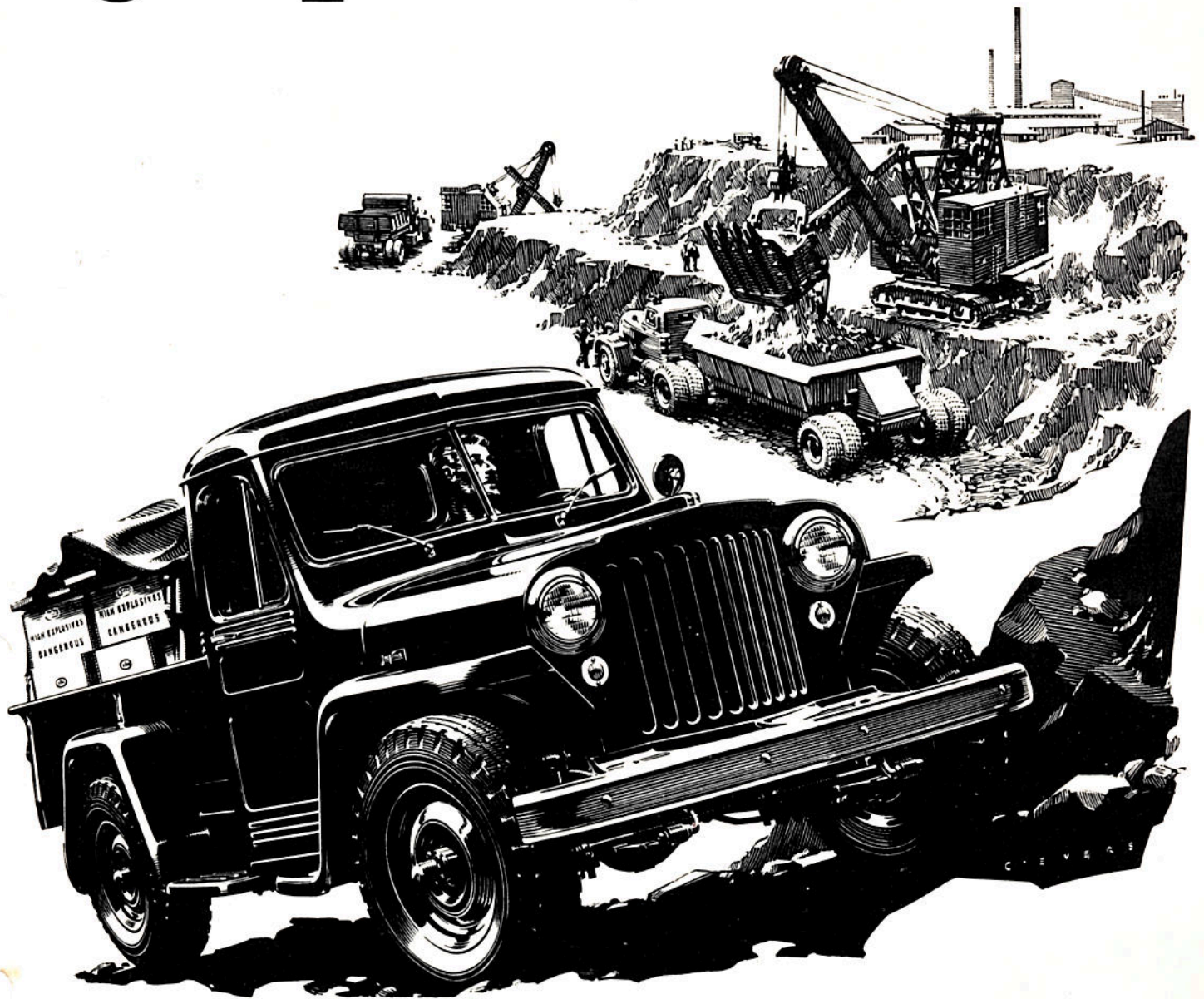


# 'Jeep' TRUCKS



The war-tested Willys-Overland 'Jeep' engine—world-famous for stamina, dependability and long life—is the power heart of the 'Jeep' truck line. 'Jeep' truck owners praise the economy of operation and maintenance and long service from an engine proved by billions of miles of use in every climate in the world. The functional bodies set the pace for new ways to cut dead-weight and add to practical utility. In addition to the 2-wheel drive model, with its variety of body styles allowing it to be tailored to any job, Willys-Overland has added a 4-wheel drive unit to its line, thus again providing a vehicle to emphasize the Willys-Overland philosophy: "Makers of the World's Most Useful Vehicles."

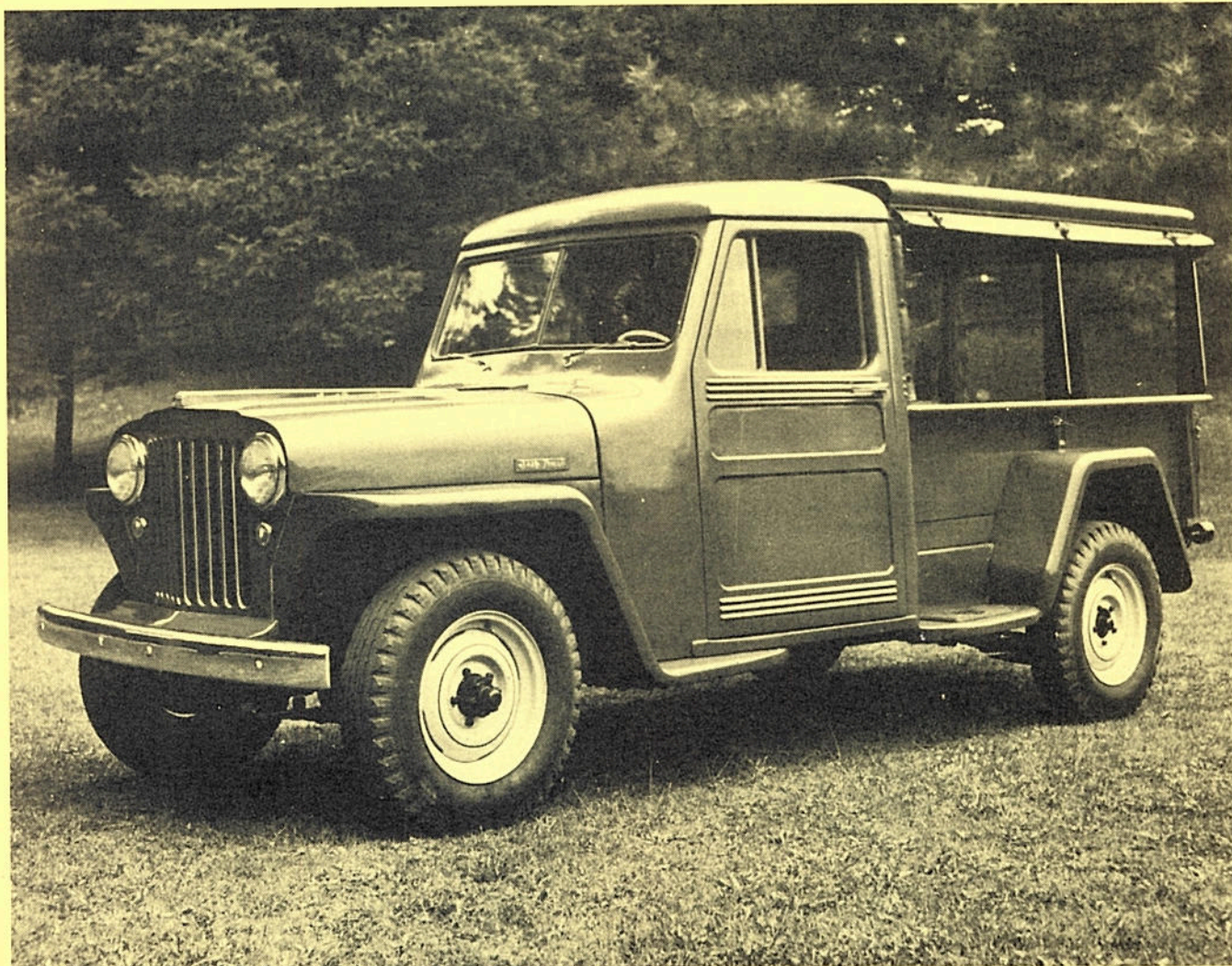


# SOME USES





**W-O CANOPY EXPRESS TOP FOR 'JEEP'  
TRUCK LINE AFFORDS LOW-COST  
PROTECTION OF VALUABLE CARGO**



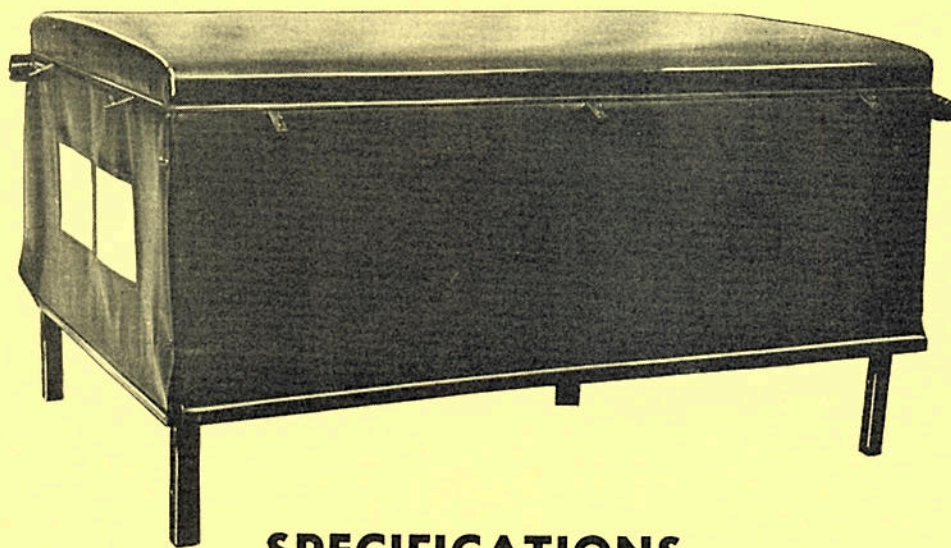
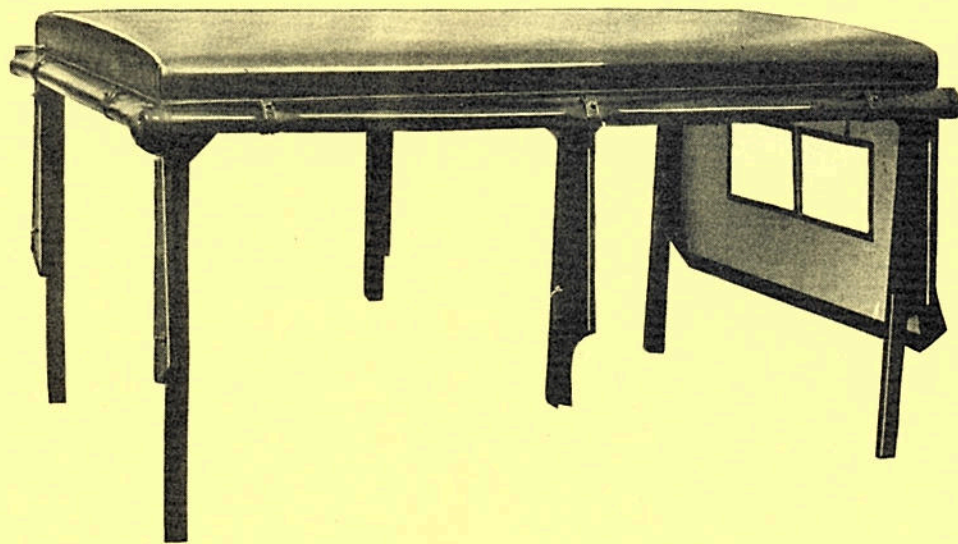
**IDEAL FOR GREENGROCCERS, FARMERS**

- FULL WEATHER PROTECTION
- LIGHT WEIGHT
- INEXPENSIVE
- QUICK ON AND OFF

**OBTAIN THIS *FACTORY-APPROVED* EQUIPMENT FROM  
YOUR WILLYS-OVERLAND DISTRIBUTOR OR DEALER**



**FROM DISPLAY SPACE TO FULL PROTECTION—FAST**



**SPECIFICATIONS**

Wood construction—four main corner posts and two intermediate posts made to engage in stake pockets in standard pickup box. Wooden slat roof covered with imitation leather top material. Roll-up curtains provided on all four sides extending from roof and overlapping the sides of the steel box. Overall loading space 47" high by 78-13/16" long by 48 1/2" wide. Loading space under rear roof rail: 40 7/8".

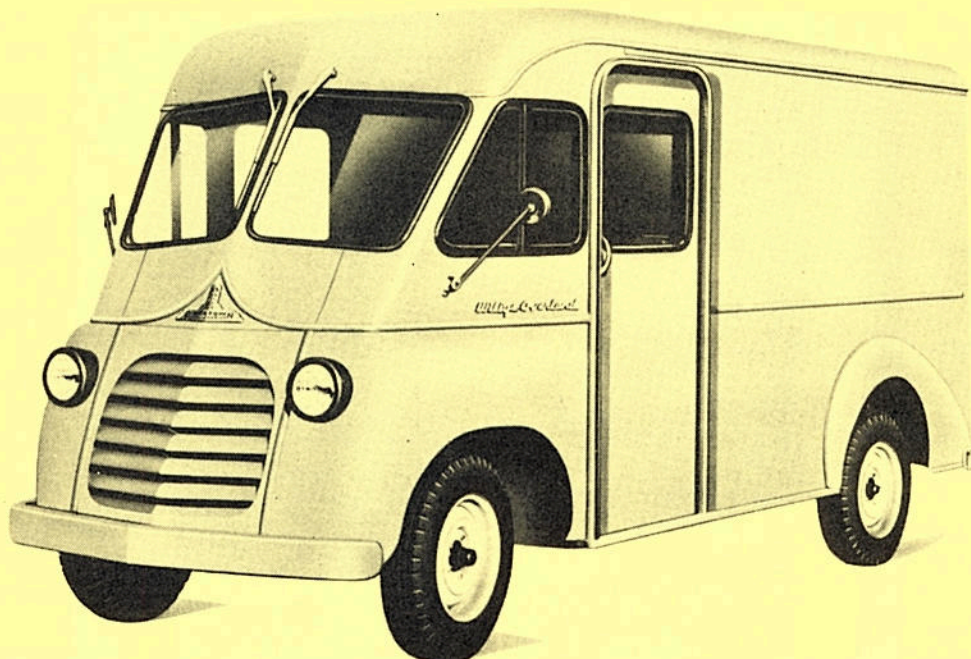
**OBTAIN THIS FACTORY-APPROVED EQUIPMENT FROM  
YOUR WILLYS-OVERLAND DISTRIBUTOR OR DEALER**



TRUCK BODIES

**BOYERTOWN**  
"BETTER BUILT"

SINCE 1872



THE **NEW** BOYERTOWN "Better-Built" MERCHANDISER  
ALLOY METAL **TWICE-THE-LOAD DELIVERY BODY**

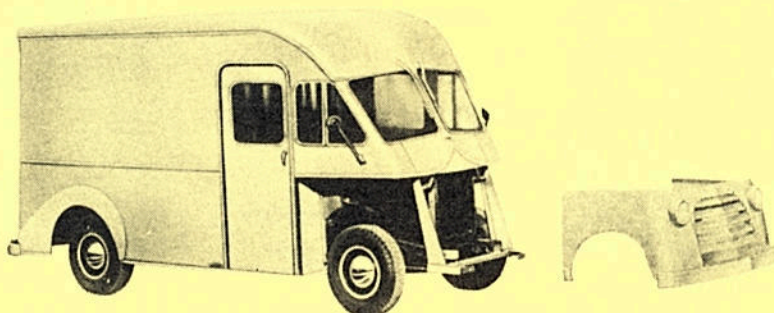
Engineered for mounting on  
WILLYS TRUCK CHASSIS MODEL:

2 W. D.—118" wheelbase.

242 Cubic Ft. Load Space, measuring  
102" long; 66" wide; 62" high.

*Featuring*

EXCLUSIVE BOYERTOWN "BETTER-BUILT"  
REMOVABLE FRONT FENDER and GRILLE  
providing maximum accessibility  
to motor and chassis parts



Boyertown  
"Better-Built" Bodies

**BOYERTOWN AUTO BODY WORKS, INC.**  
BOYERTOWN, PENNSYLVANIA  
Phone 74

Since  
1872

*p. 182 on N of date*



P2175 @ Motor  
on 3/4 ton chassis

## TRUCK BODIES

# BOYERTOWN

"BETTER BUILT"

SINCE 1872

TWO HEAVY-DUTY  
WINDSHIELD WIPERS

LARGE DOME LIGHT

SLIDING CAB DOORS

TWO REAR-VIEW  
MIRRORS

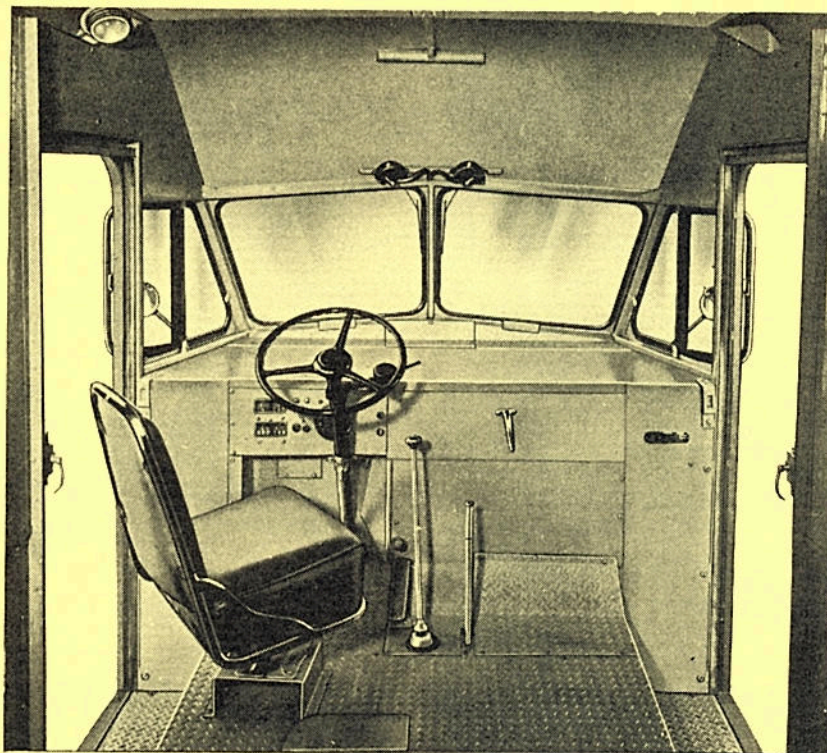
VENTILATING  
SIDE WINDOWS

ACCESSIBLE DRIVING  
CONTROLS

ADJUSTABLE SWIVEL-  
TYPE DRIVER'S SEAT

LOW ENTRANCE STEP  
AND HIGH HEADROOM

BATTERY AND BRAKE  
SERVICE OPENING



"FIBERGLAS"  
INSULATED ROOF

UNOBSTRUCTED DRIVER  
ACCESS EITHER RIGHT  
OR LEFT SIDE

FULL VISION  
SAFETY GLASS

DEFROSTER OPENING

LARGE PACKAGE SHELF

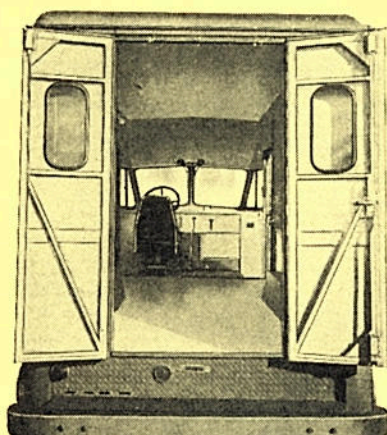
RADIATOR FILLER  
OPENING

HINGED ENGINE COVER  
FOR COMPLETE MOTOR  
SERVICE ACCESSIBILITY

SAFETY PLATE FLOOR

REMOVABLE  
TRANSMISSION COVER

## Note these outstanding features of THE NEW BOYERTOWN "Better-Built" MERCHANDISER



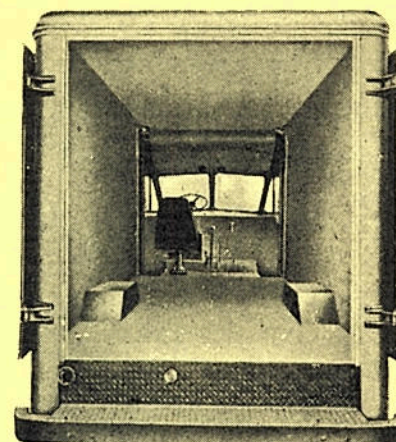
QUARTER-TYPE REAR DOORS

FLAT TOP WHEELHOUSE

FULL HEIGHT  
THROUGHOUT ENTIRE  
WIDTH AND LENGTH

HEAVY-DUTY HARDWARE

CHANNEL BUMPER WITH  
SAFETY TREAD STEP



FULL-WIDTH REAR DOORS

FOR COMPLETE INFORMATION, CONSULT . . .

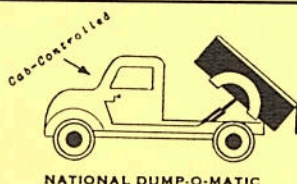
Boyertown  
"Better-Built" Bodies

**BOYERTOWN AUTO BODY WORKS, INC.**  
BOYERTOWN, PENNSYLVANIA  
Phone 74

Since  
1872



# "Jeep" DUMP TRUCK



**YOUR SALES WILL JUMP  
WITH THE PICKUP DUMP**

**CONVERT THE 1 TON JEEP  
TRUCK INTO A DUMP TRUCK  
WITH AN AUTOMATIC HY-  
DRAULIC TWIN-HOIST UNIT!**

**1** CONTROL KNOB  
ON THE DASH!

**NOT** handpumped!

See your nearest distributor or write  
us, Dept. WEB, for full information.

**NATIONAL**  
**"Jeep" TRUCK**  
**DUMP-O-MATIC**

Hydraulic Hoist and Dump Body  
for 2WD and 4WD one ton truck.  
Powered by the New HYDRA-  
CLUTCH PUMP . . . a Clutch-  
type hydraulic power pump.

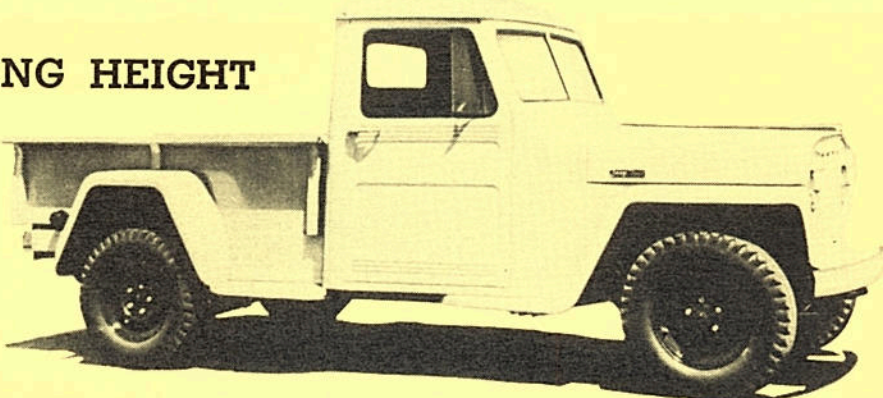
**NATIONAL** TRUCK EQUIPMENT CO.  
WAUKESHA, WIS.



# "Jeep" HYDRAULIC DUMP TRUCK

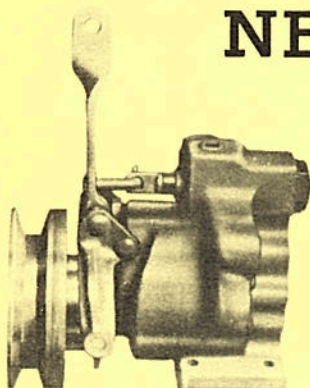
### EASY LOW LOADING HEIGHT

The illustration at the right shows the National Dump-O-Matic installed under the original pickup box. The original smooth lines and design of the Willys-Overland Jeep Truck are not altered by this installation. The easy, low loading height . . . an all important factor . . . is successfully maintained with the installation of the National Dump-O-Matic.



## NEW HYDRA-CLUTCH PUMP

7" high - 7" long



This sturdy, rugged, compact, Clutch-type Hydraulic Pump, shown at the left, provides the power to raise the dump box. It is installed under the hood, on the truck motor.

The HYDRA-CLUTCH PUMP operates only when the box is being raised. The clutch is engaged by one simple movement of the ONE control knob on the dash. This ONE control knob raises, holds or lowers the dump box.

The HYDRA-CLUTCH PUMP, because its small, compact design, may be used to power any hydraulic device that is now hand-operated.

## SPECIFICATIONS

The National Dump-O-Matic is available as a Box Conversion Kit, designed for the Willys-Overland Jeep Truck. This Kit includes the HYDRA-CLUTCH PUMP, two Hydraulic Rams, a heavy steel frame to reinforce the bottom of the Jeep truck box, all Hydraulic hoses and connections and all other necessary parts for complete installation.

The Stake Platform or Stock and Grain Box Conversion Kits are also available for the Willys-Overland Jeep Truck.

The National Dump-O-Matic is available as a complete Unit, designed for the Willys-Overland Jeep Truck. This Unit includes the HYDRA-CLUTCH PUMP, two Hydraulic Rams, the heavy-duty National all-steel, electrically welded dump box (with double-acting tailgate), all Hydraulic hoses and connections and all other parts necessary for complete installation.

The National Dump-O-Matic has a rated lifting capacity well over the gross vehicle rating of the Willys-Overland Jeep Truck.

The National Dump-O-Matic is sold through Willys-Overland Truck dealers everywhere. For further information and the name of your nearest Dump-O-Matic distributor, please write us, Dept. WEB.

# NATIONAL TRUCK EQUIPMENT CO.

WAUKESHA, WIS.



## **SECO MILL DIRECT DRIVE**

**MOUNTED ON 4-WHEEL DRIVE**

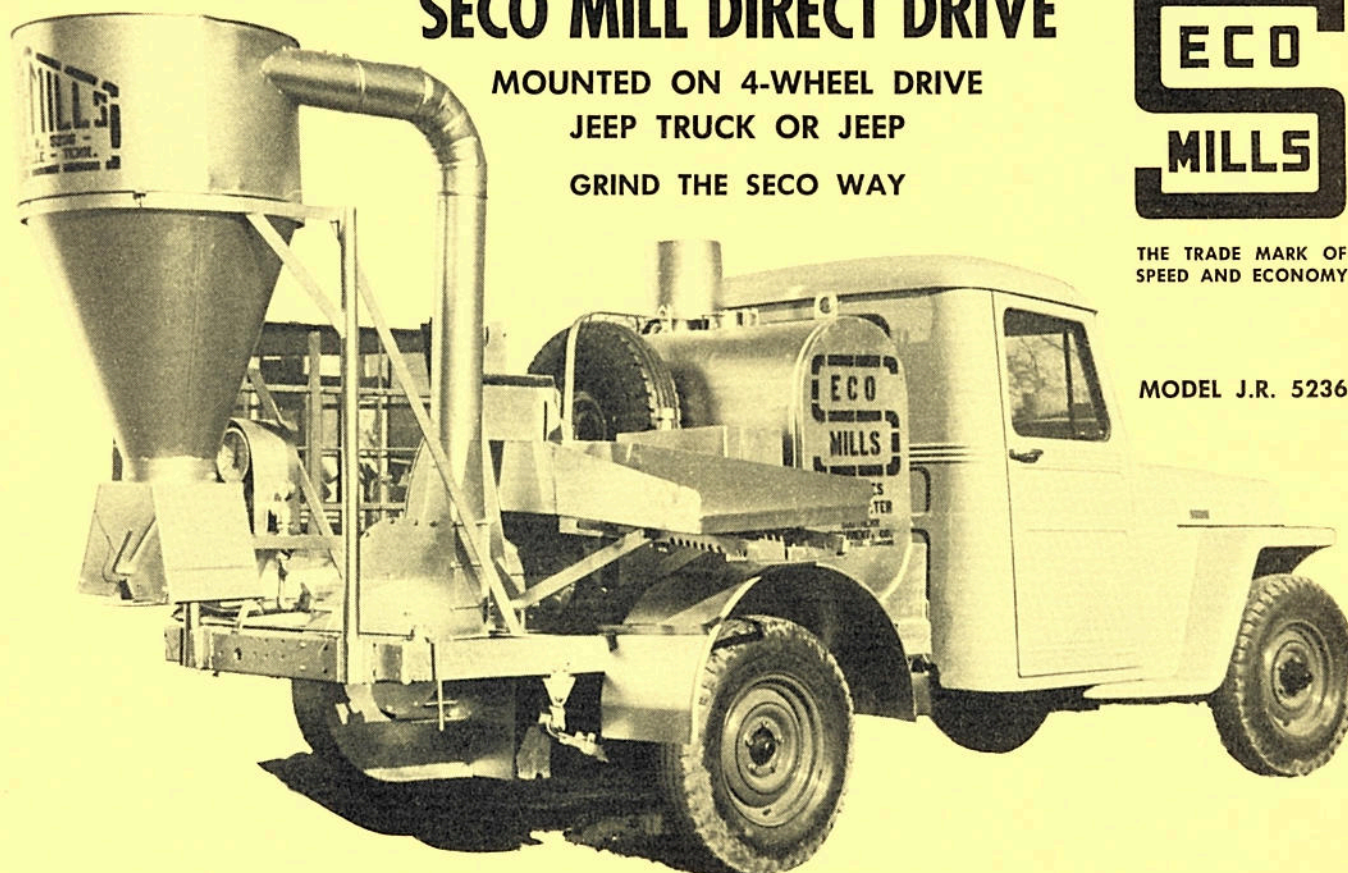
**JEEP TRUCK OR JEEP**

**GRIND THE SECO WAY**



THE TRADE MARK OF  
SPEED AND ECONOMY

MODEL J.R. 5236



### **NEW DEVELOPMENT**

**In Grinding and Molasses Impregnating Efficiency Results of Skillful and Careful Engineering to Meet the Requirement of Fast Grinding at Low Operating Cost.**

- **Gets where you want to go ECONOMICALLY**
- **Does the job fast with LESS OPERATING COST**
- **Direct drive power take-off from JEEP MOTOR**
- **LOW FIRST COST . . . LOW UPKEEP**

**Start a business of your own on wheels. With the 4-wheel drive Jeep truck you can drive right to your customer's barnyard and make his own sweet feed.**

### **DRY MILLS MOUNTED ON JEEPS**

**1. Compact — easily operated. 2. Designed for every day heavy duty. 3. All steel welded construction. 4. Dust protected — slip in type screens for quick change. 5. Special alloy steel Rotor Shaft. 6. Heat hardened alloy steel hammers with four (4) way action. 7. Timed alignment eliminates vibrations — a smooth-running, sturdy mill.**

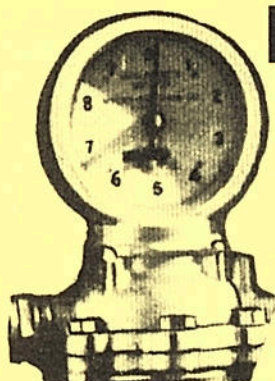
### **SOUTHERN EQUIPMENT CO.**

**GOODLETTSVILLE, TENN.**

**PHONE 5236**



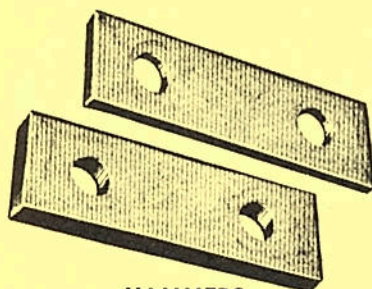
## HERE'S A PROFITABLE BUSINESS



**MOLASSES IMPREGNATOR CONTROLS**

All controls and Gauges Built on rear of mill for simplified one-man operation.

(Temperature and feed rate gauges accurately indicate proper feeding and correct molasses.)



**HAMMERS**

Finest quality — hard tempered Alloy steel hammers, each with 4 cutting edges. Reversible for 400 tons of grinding per set. That's Economy.

Portable grinding in demand . . . your chance to expand.

The Seco Mill is transported by Jeep Power into the farmer's barnyard — grinds his feed then and there. He is saved the expensive, time consuming work of loading and hauling his grain to a mill. Supplements or molasses may be efficiently mixed with the feeds as they are ground, giving him the advantage of balanced palatable rations. The Seco Mill grinds his grain and roughages exactly as he wants them.

All these advantages of Seco Mobile service operate in your favor . . . Advantages that help build a profitable, expanding business for you.

### Mobility Gets the Extra Grinding Business

You set the pace with the Seco Mill — your 4-wheel drive Jeep moves it to the barnyard or in the barn. You don't have to wait for business to come to you. Many welcome your service and you'll get their business when you bring the mill to them. You get this extra business with the Seco Jeep-powered portable.

### Steady Income Year-Round

Feed grinding is a year-round business — a steady business. You have a good income every month. It's reliable service that creates REPEAT business, bringing in many dollars of profit from each customer. The Seco Mobile unit is built to take hours of grinding day after day, year after year. This is of prime importance in helping you "keep that income coming in."

SPECIFICATIONS		AVERAGE GRINDING PER HOUR	
	Typers, Etc. Boiler Plate—600 lbs.	Fine	Medium
Mill with Dust Collector*	Steel	Small Grain 1 — 2½ T	2½ — 4 T
Blower with Elbow	24 ga. galv.	Ear Corn 1½ — 3 T	2½ — 4 T
Dust Collector, etc.	16 ga. steel	Shelled Corn 1½ — 3 T	3 — 4½ T
Feed Hopper	16-Carburized Steel	Corn Fodder 1 — 2 T	1½ — 3 T
Hammers	20½"	Hay 1 — 2 T	1½ — 3 T
Hammer Sweep	22 guage	Coarse Grind — Liberal Increase Assured for Coarse Grinding.	
Pipes	2800 R.P.M.		
Speed	Taper Roller		
Bearings	Cold Rolled Steel		
Shaft			
*Mill — Ht. 47", Wd. 40" Lgth. 28"			
Fan, directly attached to Rotor Shaft.			
Hinged Top with quick fastener.			

**SOUTHERN EQUIPMENT CO.**

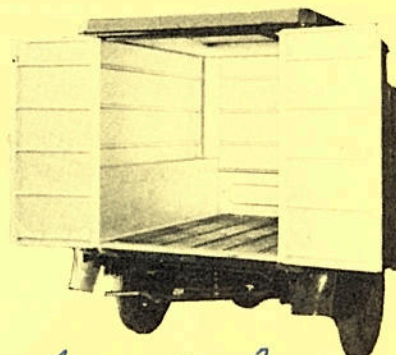
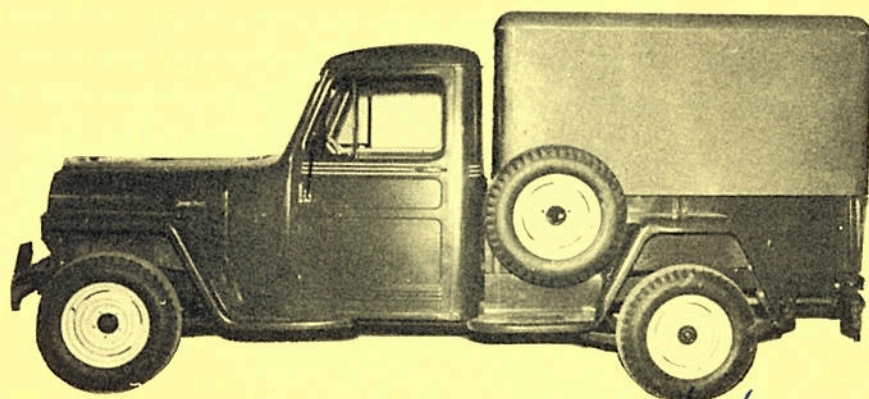
GOODLETTSVILLE, TENN.

5236 -:- 5237



# ROCKFORD PANEL PICK-UP BODY

FOR ASSEMBLY ON WILLYS EXPRESS BODIES



*7/17/50 No longer being produced says W-O  
Delete this sheet fr. bk.*  
**1000 SERIES PANEL PICK-UP BODY**

**WEIGHT 420**

All Rockford Bodies are designed for mass production and are knocked down units built in sub-assemblies, furnished in prime paint, shipped in package. All necessary bolts and instructions are included with each unit. This body can be assembled by an average mechanic.

## GENERAL SPECIFICATIONS

CONSTRUCTION: All steel welded and bolted  
FRAMEWORK: 14GA. High tensile pressed steel  
PANELS: 22GA. C. R. steel sheets  
CORNERS: Rolled streamline, 4 in. radius

DOORS: Double full-length, 45" x 45" opening  
DOOR HANDLE: Locking sedan type  
DIMENSIONS: 34" high above flare, 58" wide inside, 78" long inside

SUB-ASSEMBLIES ARE BOLTED TOGETHER AND THE COMPLETE ASSEMBLY IS BOLTED TO THE FLARE-BOARD.  
INDIVIDUAL PARTS OR ASSEMBLIES ARE REPLACEABLE IN CASE OF DAMAGE.

## ROCKFORD AUTOMOTIVE INDUSTRIES

Incorporated

EXPORT DEPARTMENT

1008 OAK STREET

20 N. WACKER DRIVE, CHICAGO 6, ILLINOIS

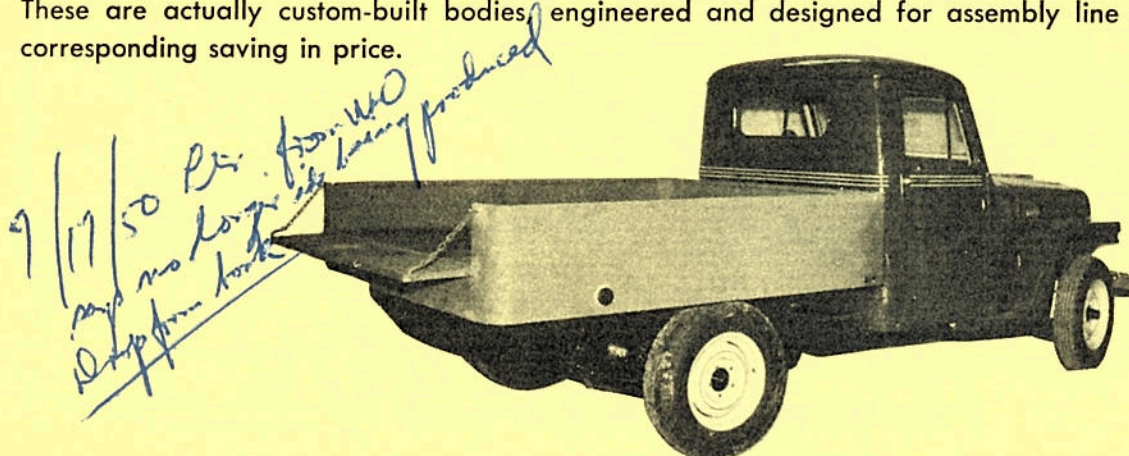
DE KALB, ILLINOIS, U. S. A.



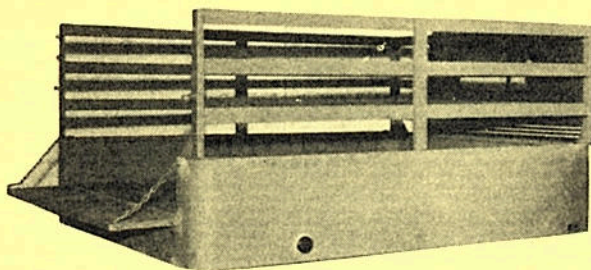
# ROCKFORD DELUXE TRUCK BODIES

## FOR ASSEMBLY ON WILLYS $\frac{3}{4}$ and 1 TON TRUCKS

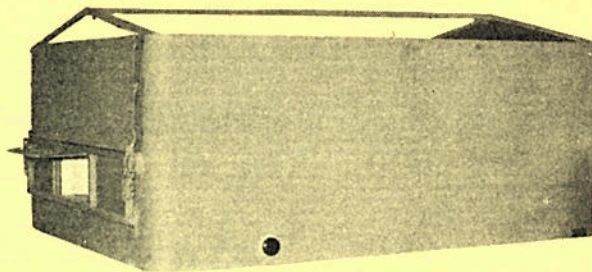
The Rockford All Purpose Deluxe Bodies are designed to give the operator modern styling together with dependable service. Note the smooth rounded corners and semi-skirted sides giving it a streamlined appearance as well as ample sign space. The use of tubular steel slats and extra strong, high tensile steel panels with welded construction make these bodies one of the lightest and strongest on the road today. These are actually custom-built bodies, engineered and designed for assembly line production with a corresponding saving in price.



**200 SERIES EXPRESS BODY**  
10" Solid Sides      Weight 460



**3200 SERIES LOW STAKE BODY**  
Sides and front, 10" solid panel with 24" tubular  
steel racks      Weight 570



**4200 SERIES GRAIN BOX BODY**  
28" Solid box, Steel spill gate 8 x 20  
Weight 680

### GENERAL SPECIFICATIONS

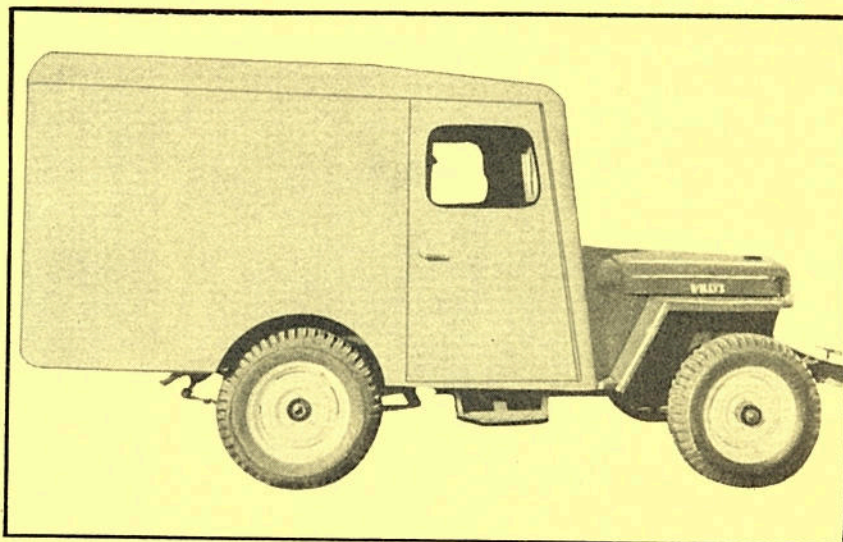
- |   |   |
|---|---|
| 1—CROSSMEMBERS: 6" I-Beams U-Bolted to frames                               | 9—PANEL SUPPORTS: 18GA. Square steel tubing                                   |
| 2—WOOD FLOOR: 1" tongue and grooved, flat above tires with proper clearance | 10—10" DROP TAIL GATE: of 14GA. High tensile steel<br>Welded to tubular frame |
| 3—FLOOR CLEATS: 1" hardwood on 12" centers                                  | 11—PAINT: Red oxide primer  |
| 4—FLOOR SUPPORT ANGLES: 2"x2"x14GA. High tensile steel                      | 12—DIMENSIONS: Width, all bodies 74" outside                                  |
| 5—SEMI-SKIRTED: To top of chassis frame                                     | 13—DIMENSIONS: Length, 80" or 86" outside                                     |
| 6—SIDE PANELS: 14GA. High tensile steel                                     | 14—SHIPPED: Knocked down or mounted on chassis                                |
| 7—ROLLED STREAMLINE CORNERS: 4" radius                                      | 15—ASSEMBLED EASILY BY SHOP MECHANIC, DISTRIBUTOR OR FACTORY                  |
| 8—FRONT PANELS: 14GA. High tensile steel                                    |   |



# Now! An ALL-STEEL 'Jeep' Panel Body!

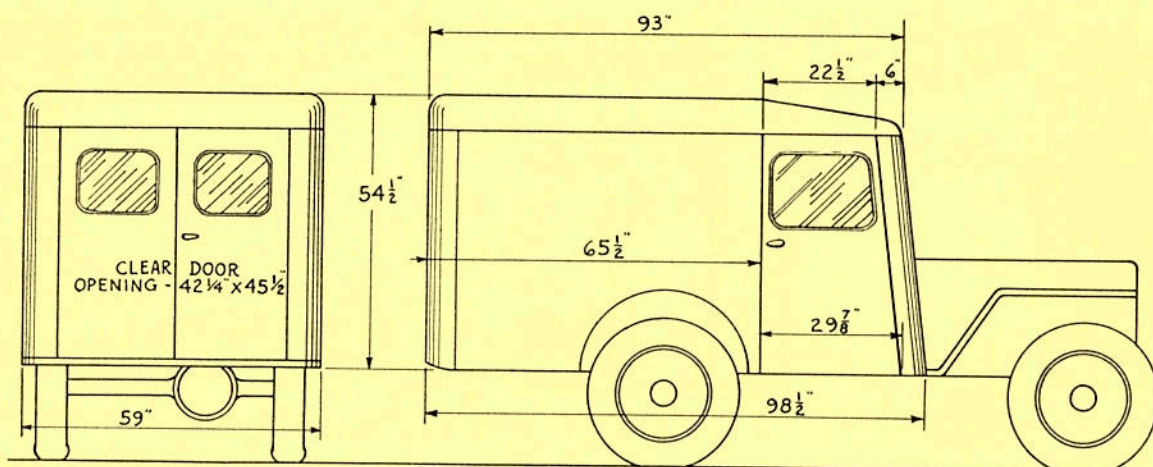
**STREAMLINED — IT COMES KNOCKED-DOWN IN 5 SECTIONS ...CAN BE ASSEMBLED IN ONLY 3 HOURS!**

The most important feature of this panel delivery body is its ruggedness made possible by the use of heavy gauge steel throughout. It is pre-fabricated in 5 sections at the factory and can be bolted together and completely assembled in about three hours. Side sections, including both front and rear doors, have been welded to make a single unit, thus assuring greatest strength at all points of stress. Equipped with spacious shelf in front of driver it also features full-opening rolling windows in both front doors. Body is primed at factory ready for customer's own color. It is shipped in a sturdy crate.



## FEATURES

All body panels made of 20 ga. sheet steel. SUPPORTING ribs 16 ga. steel. STEEL corners 18 ga. STEEL extension of body 24 inches. WINDOW regulators and hardware made by Hanson. MOUNTED on 'Jeep' in three hours and DISMOUNTED in one-half hour. WATERTIGHT overlapping seams prevent leakage. STURDY-BUILT to body and frame for longest life — it becomes integral part of 'Jeep.' SIDE windows roll up and down. PAYLOAD space totals 92 cubic feet. LARGE rear doors with full-length hinges allow for easy loading and unloading.



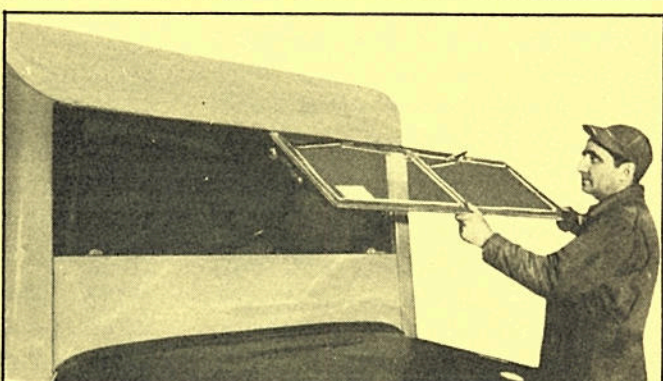
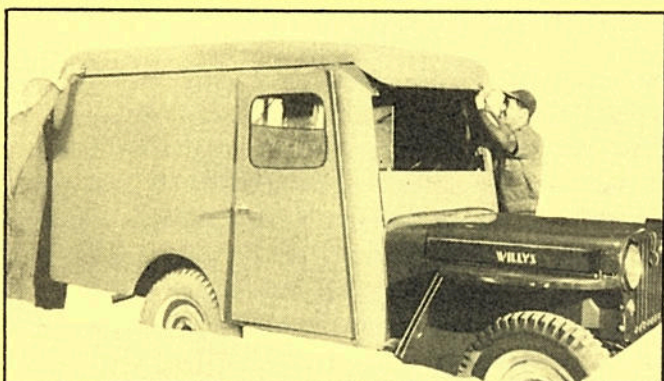
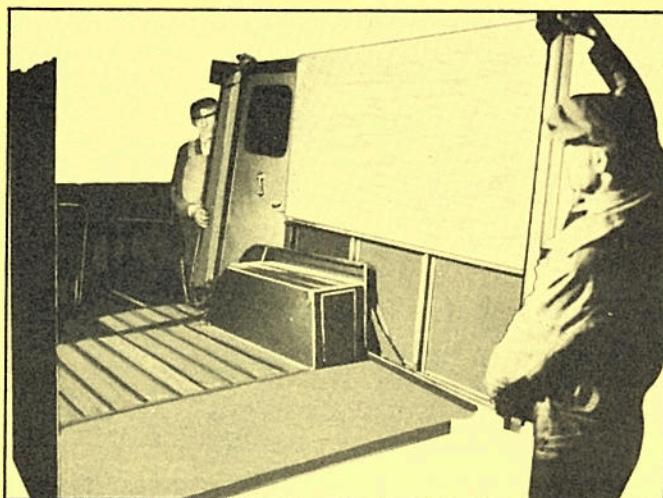
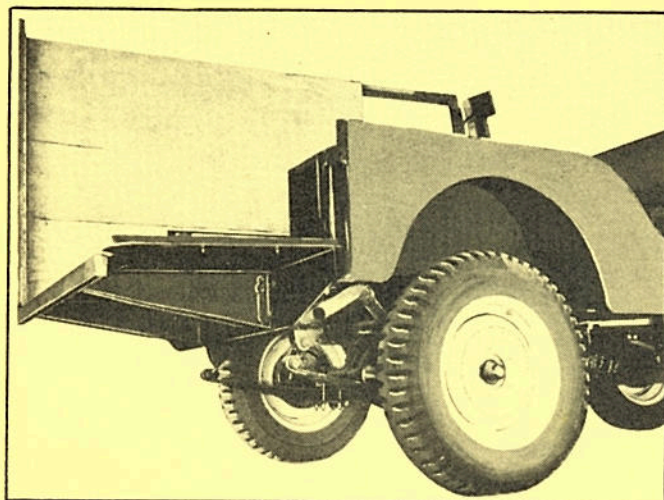
# S & B CORPORATION

112-10 ROCKAWAY BLVD., OZONE PARK 16, N. Y.

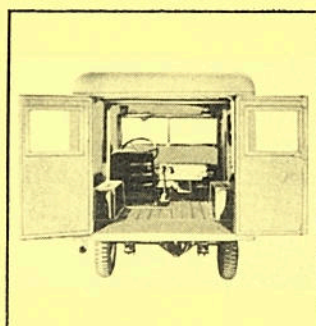
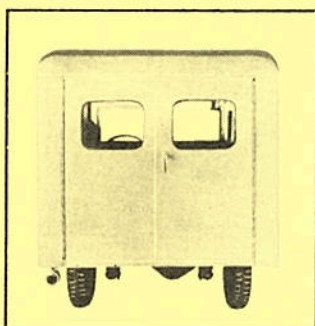
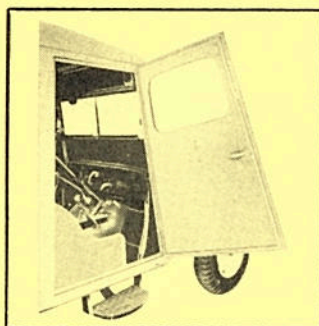


## WILLYS-OVERLAND EQUIPMENT BOOK

*Here's how EASY it is to install the ALL-STEEL  
S & B Panel Delivery Body on the Universal 'Jeep'*



**DESIGNED FOR GREATEST CONVENIENCE, MAXIMUM EFFICIENCY**



All-steel radius post

•

Steel doors and locks, front and rear

•

Steel roof

Steel  $\frac{5}{16}$ " retainer nuts spot-welded to body

•

Side-assembly includes post, door side and back

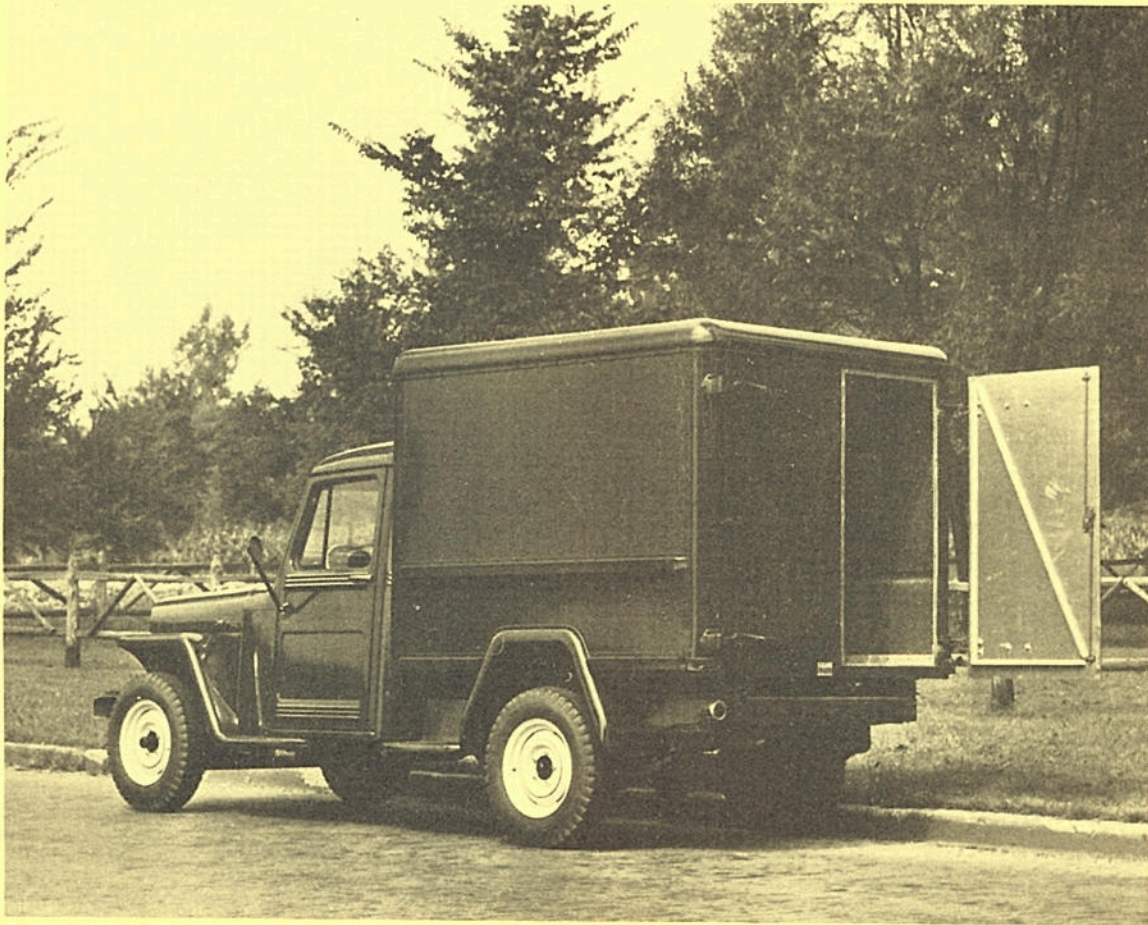
FOR ADDITIONAL INFORMATION WRITE

# S & B CORPORATION

112-10 ROCKAWAY BLVD., OZONE PARK 16, N. Y.



## **SPRECKSELL MAGNESIUM ALLOY BODIES FOR W-O 2WD AND 4WD TRUCKS LOWER OPERATING COSTS AND PERMIT MUCH LARGER PAYLOADS**



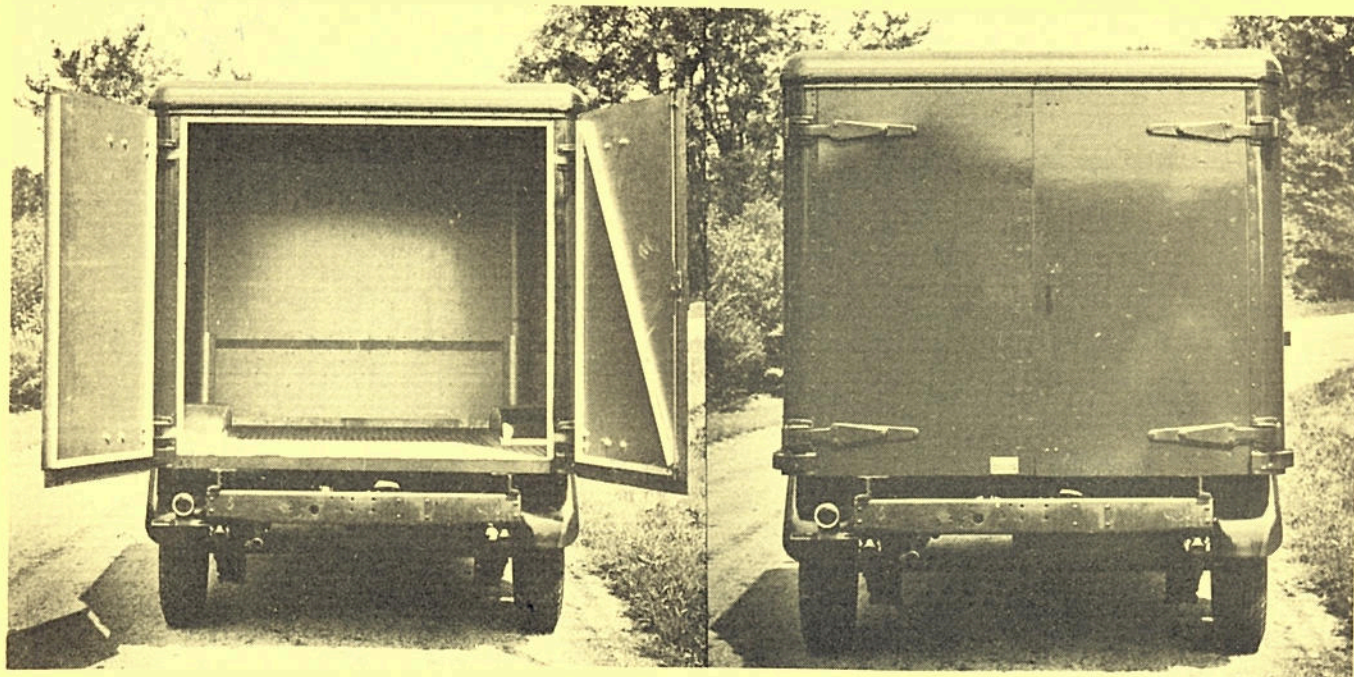
Here is a van panel truck body designed and built specifically for the Willys-Overland 2WD and 4WD truck cab and chassis, and which allows a full one ton payload. Constructed of magnesium throughout, these bodies are built from experience developed in the use of high strength magnesium alloys for aircraft and larger light-weight truck bodies. Strength and ruggedness have been achieved at a minimum dead weight, as is indicated by its total weight of only 450 pounds with 190 cubic feet of usable loading space. This ruggedness has been achieved without loss of smooth clean lines inside and out—note from the pictured unit how the body smoothly matches the truck lines and gives an obstruction-free interior with plenty of room. Rear doors open to the full width and lie flush with the sides when open, thus allowing full access to the interior. Other type doors can be had as optional equipment.

**SPRECKSELL BODY CORPORATION**  
**26269 GROESBECK HIGHWAY, EAST DETROIT, MICHIGAN**



# **GREATER PAYLOADS— EASIER LOADING—**

**WITH SPRECKSELL MAGNESIUM BODIES!**



## **Specifications**

Approximate inside dimensions: 84" length, 70" width, 57" height  
Outside: 86" length, 73" width  
Wheelhousing height: 6"  
Weight: 450 pounds  
Loading height: 31"  
Rear door opening: 58" width x 52" height  
Alloy magnesium plate construction:  $\frac{5}{32}$ " gage  
Rear locking doors open clear to side of body.  
Riveted weathertight construction to keep load completely dry.  
Double side rub rails  $\frac{3}{16}$ " alloy magnesium with rubber corner.  
Heavy duty corner posts and caps.

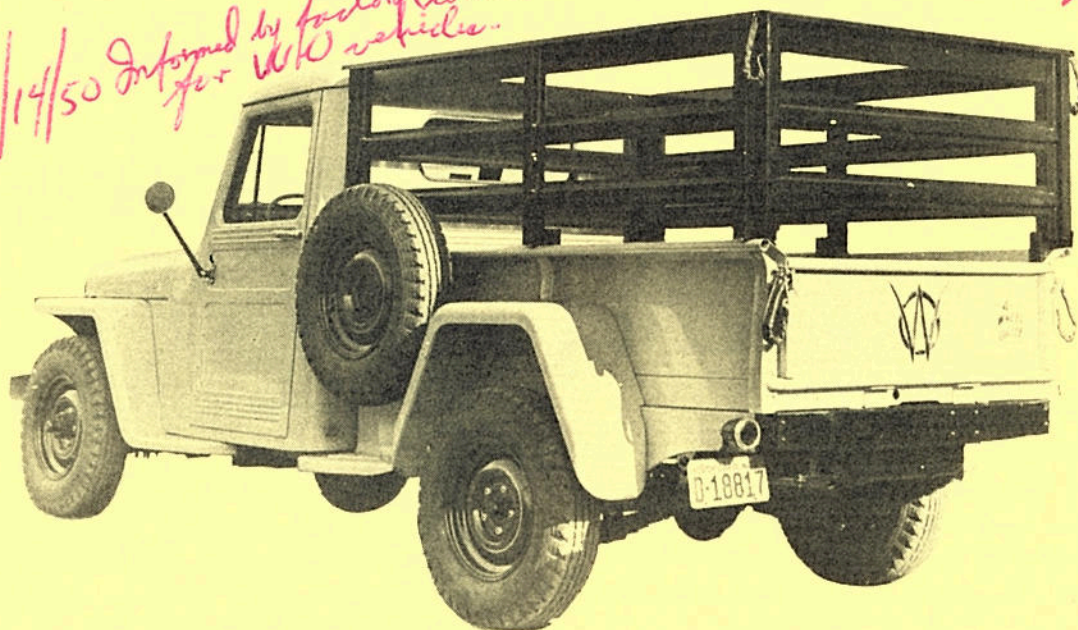
**SPRECKSELL BODY CORPORATION**  
**26269 GROESBECK HIGHWAY, EAST DETROIT, MICHIGAN**



# Pick Up Extra Profit!

## WITH THE GRANITE ALL STEEL STAKE ATTACHMENT

*6/14/50 Informed by factory (Adid) these stake attachments no longer being produced for W/O vehicles.*



## FOR 'JEEP' PICK-UPS

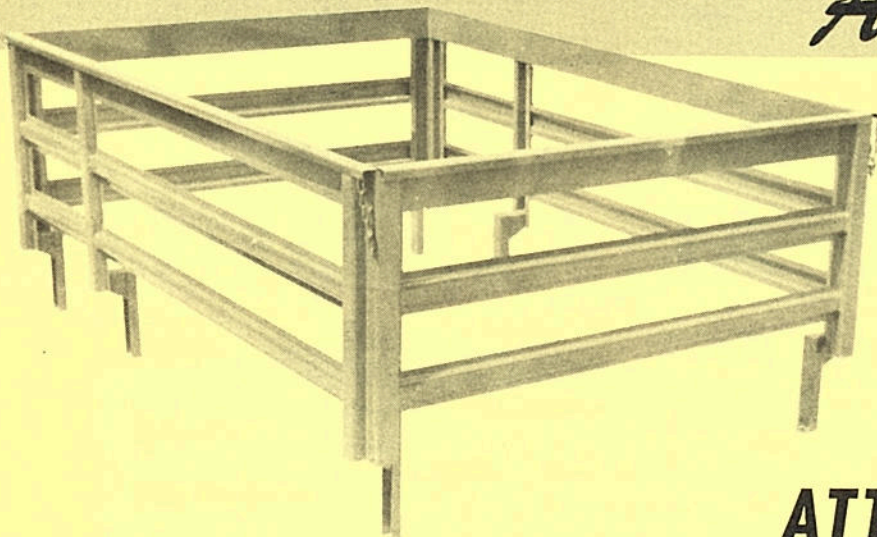
Especially designed to exactly fit the box of the Jeep pick-up truck. Order through your Willys-Overland distributor or direct from the manufacturer.

*Granite*

MANUFACTURING CO., INC.  
MOUNT AIRY, NORTH CAROLINA, U. S. A.



*It's Strong--Sturdy--  
All Steel!*



## **STAKE ATTACHMENT**

### **NOTE THESE FEATURES**

1. Made of heavy gauge steel.
2. Electrically welded throughout.
3. No rough edges to tear or cut cargo.
4. Rear gate hinged and easily removable. Stakes are easy to put on and take off truck.
5. Built with offset to edge of flare on side boards to use all inside body space.
6. Offset may be used as base for constructing seat.
7. Painted red or black as you may specify.
8. Shipped knocked down and strapped in protective cardboard covering to protect paint.
9. Factory guarantee for 90 days against defects in material and workmanship.

Stake Attachments are essential to most pick-up owners. It is impossible to haul a pig, a cow, a large piece of furniture, or any other bulky load in a pick-up unless stakes are attached to the box. For the first time we offer the dealer the opportunity to profitably supply this tremendous demand using beautiful, strong and sturdy, all steel stakes.

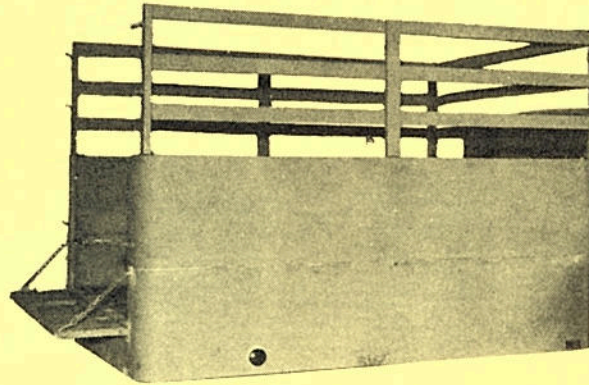
Stakes for JEEP pick-ups are sold exclusively by Willys-Overland dealers. Order through your Willys-Overland distributor or direct from the manufacturer.

***Granite***

**MANUFACTURING CO., INC.**  
MOUNT AIRY, NORTH CAROLINA, U. S. A.



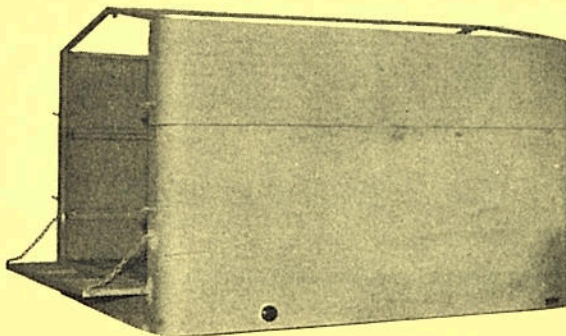
# ROCKFORD DELUXE TRUCK BODIES



## 1200 SERIES COMBINATION BODY

Sides and front, 28" solid panel with 24" tubular steel racks

Weight 690



## 2200 SERIES OPEN VAN BODY

Sides and front 28", 46" or 64" high

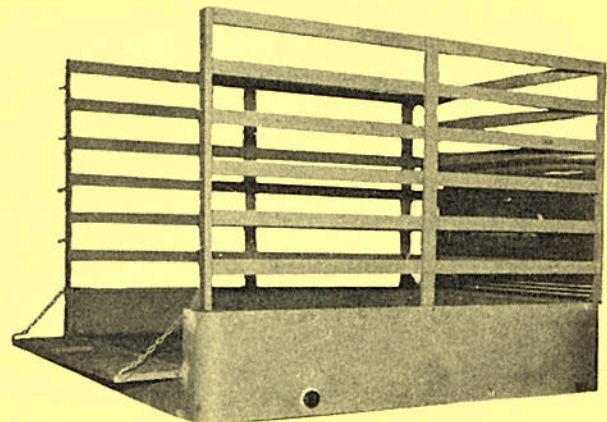
28"—Weight 670

46"—Weight 790

64"—Weight 910

All Steel Top Available

Corners 4" Radius — Weight 100



## 3200 SERIES HIGH STAKE BODY

Sides and front, 10" solid panel with 48" tubular steel racks

Weight 670

# ROCKFORD AUTOMOTIVE INDUSTRIES

Incorporated

EXPORT DEPARTMENT

1008 OAK STREET

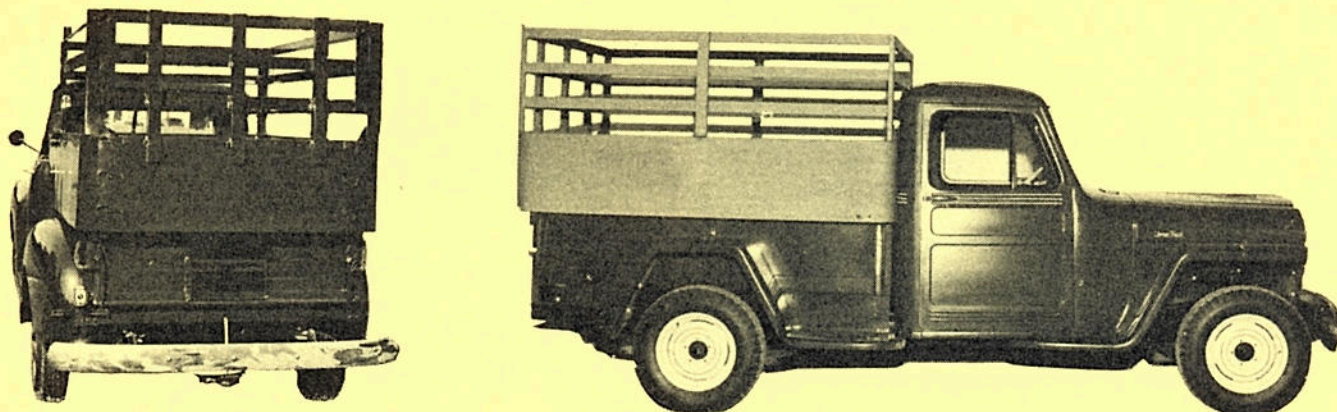
20 N. WACKER DRIVE, CHICAGO 6, ILLINOIS

DE KALB, ILLINOIS, U. S. A.



# **ROCKFORD FARM PICK-UP BODY**

**FOR ASSEMBLY ON WILLYS EXPRESS TYPE BODIES**



## **1100 SERIES FARM PICK-UP BODY**

The all-steel Farm Pick-up Body is built for all around use on the farm. Its sturdy construction and flexibility make it one of the most popular bodies developed for farm use. This body can be assembled by the average mechanic.

### **GENERAL SPECIFICATIONS**

**GRAIN BOX:** 14 ga. high tensile steel reinforced. Dimensions above flares: 15" high, 58" wide, 84" long inside

**PANEL REINFORCED:** 18 ga. square steel tubing

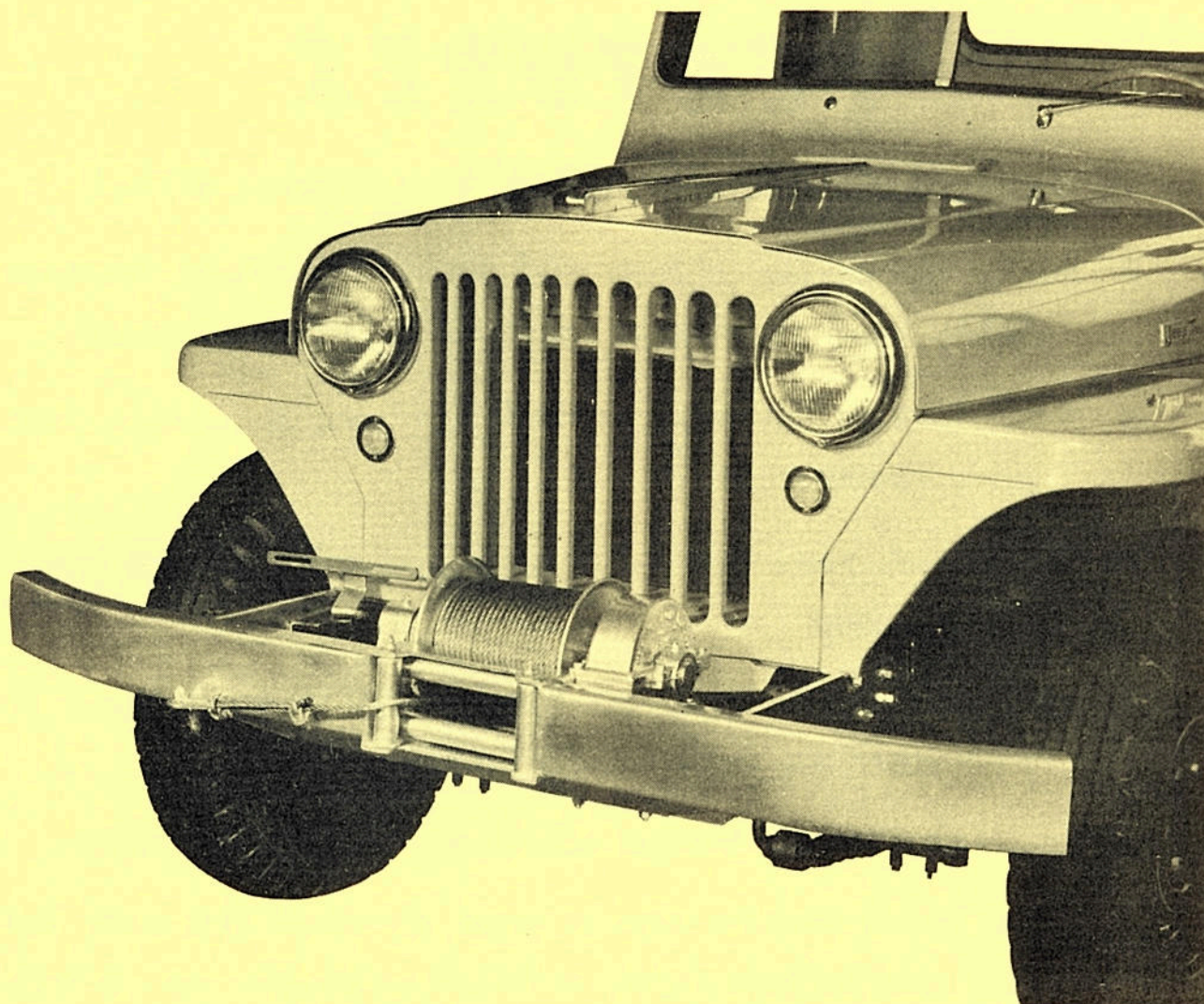
Rear panel above tail gate easily removed. Assembled with 6 hook fasteners

**STEEL SPILL GATE:** Hinged, 8"x20"

**RACK SECTIONS:** 24" high all steel 1"x2½" tubular steel slats. Posts are 11 ga. pressed steel angles. Side and front racks are bolted to grain box. Rear rack easily removed. Assembled with tubular posts and two hook fasteners

**CONSTRUCTION:** Welded throughout





## **The Two-Direction Front End Winch For *Your* Willys 4WD**

Model 100 King Winch is OUR answer to YOUR request for a cab controlled, POWER TAKE-OFF DRIVEN UNIT tough enough to work with that sturdy four wheel drive truck.

# **KOENIG IRON WORKS**

**2214 Washington Avenue**

**Houston 10, Texas**



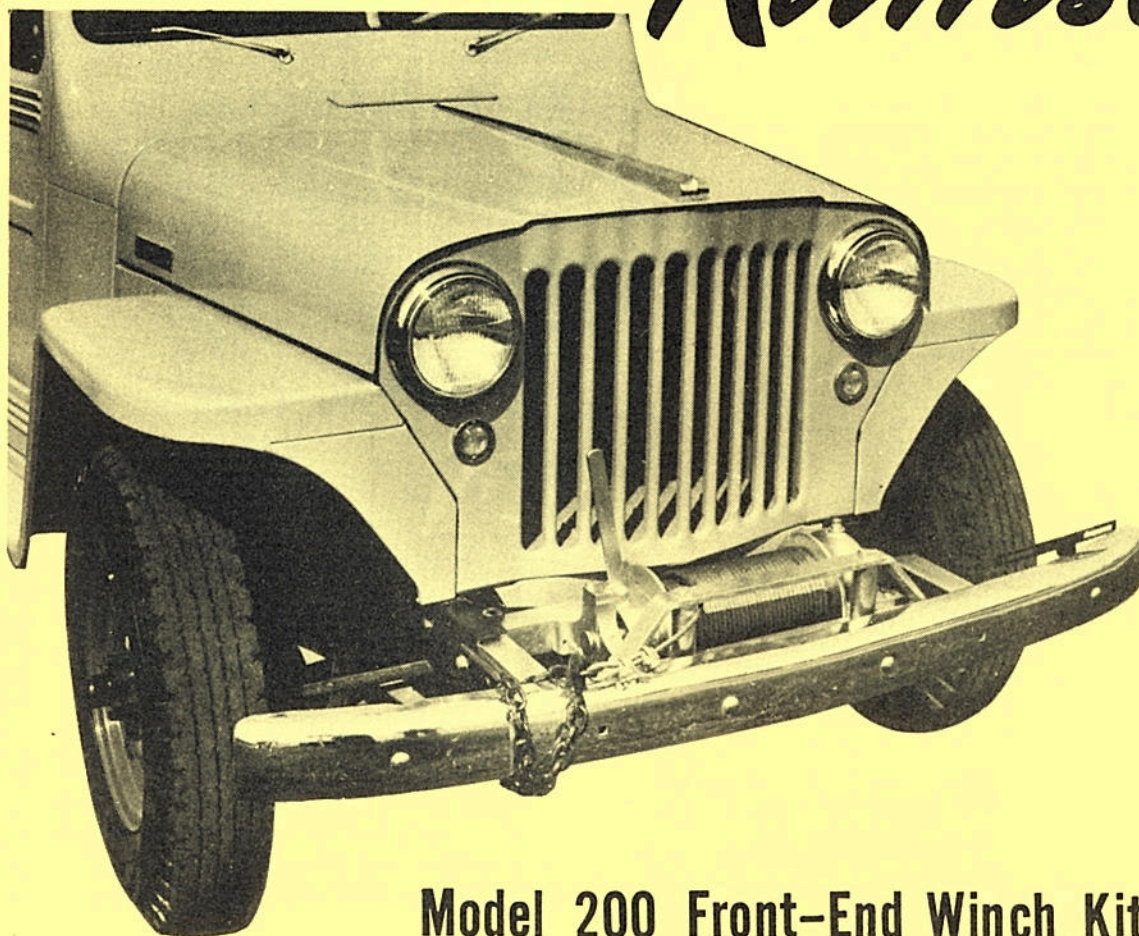
# **FEATURES**

- The approved standard Model 100 King Winch is utilized.
- Power take-off fits on Jeep truck transfer case—uses the three forward and one reverse speeds of the truck transmission.
- Front drive to the winch is made by using an oil-tight chain drive transfer case.
- This affords more positive drive than possible through crankshaft hook-up.
- Directional cab control and front-of-truck dis-engagement of drum clutch are made standard equipment.
- Heavy channel iron bumper affords maximum unit protection.
- Lower winch position assures good driveshaft clearance. Tail pipe must be bent slightly at flange and muffler moved back four inches.
- Sturdy platform side-arms are secured with eight 1/2-in. bolts through truck frame.
- List price covers all unit accessories such as power take-off, cab controls, special bumper, Federal Excise Tax and 150 feet of 5/16-in. cable with hook.
- Approved by the Willys-Overland Engineering Department.

*All King Winches Adaptable to Willys Vehicles Sold Exclusively Through Willys Distributors and Dealers.*



# Ramsey



## Model 200 Front-End Winch Kit For 4-WD Jeep Truck

- An excellent all purpose front end winch for the 4-WD Jeep Truck. Ideal for pulling the truck, loading, hoisting, and a wide variety of other purposes.
- Installation is very easy and inexpensive. All parts are made to fit the truck. Detailed mounting instructions furnished with each winch kit.
- Winch is driven from front half of power take off which provides three forward speeds and reverse. Winch in frame weighs only 89 lbs. Winch rating: 6,000 lbs. Drum holds 150 ft. of 5/16" cable with ample working room.
- See the other Ramsey Winch applications for front and rear mounting on the Jeep Trucks. Pictures on back of this page.

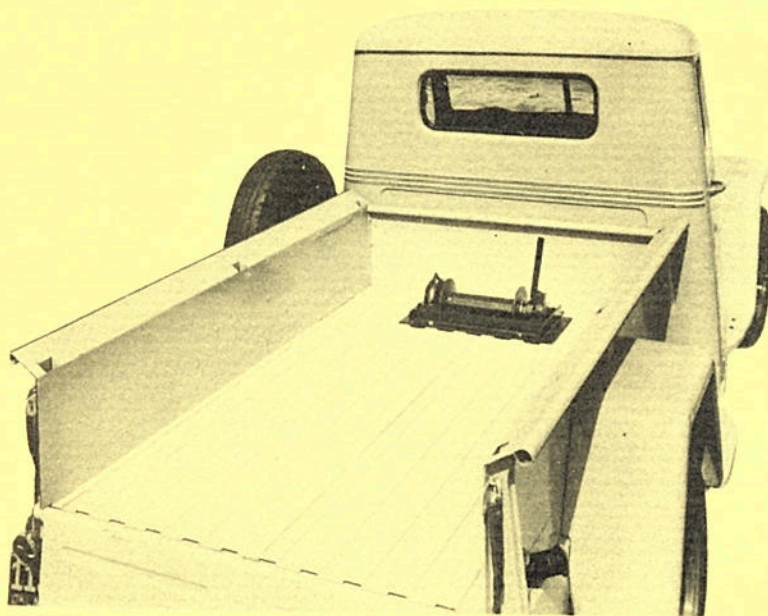
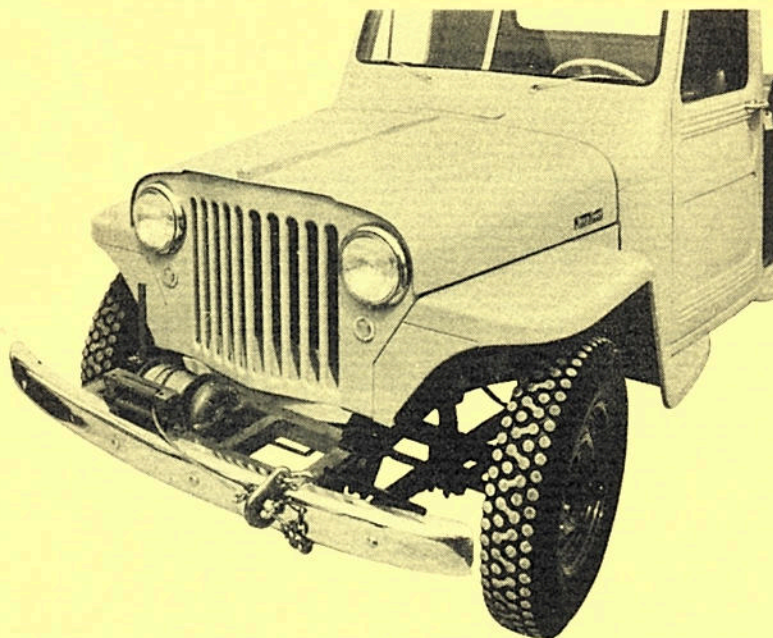


## WILLYS-OVERLAND EQUIPMENT BOOK

RAMSEY Model 101 Front End Winch Kit for 2 or 4-wheel drive Jeep Truck. Driven from front of crankshaft by the Ramsey enclosed, self-aligning jaw type clutch. No power take-off is required.

Designed for pulling the truck through deep mud or over rough terrain, although winch may be adapted for light hoisting by use of drum brake attachment available as optional equipment.

Drum holds 100 ft. of 5/16" cable. Winch in frame weighs only 85 lbs. Winch rating: 6,000 lbs. As special winch frame and other parts are made to fit the truck, the installation is very easy and inexpensive.



RAMSEY Model 200-L Bed Mount Winch Kit, for 4-wheel drive Jeep Truck. Driven by front half of Jeep Truck power take-off, which provides three forward speeds and reverse.

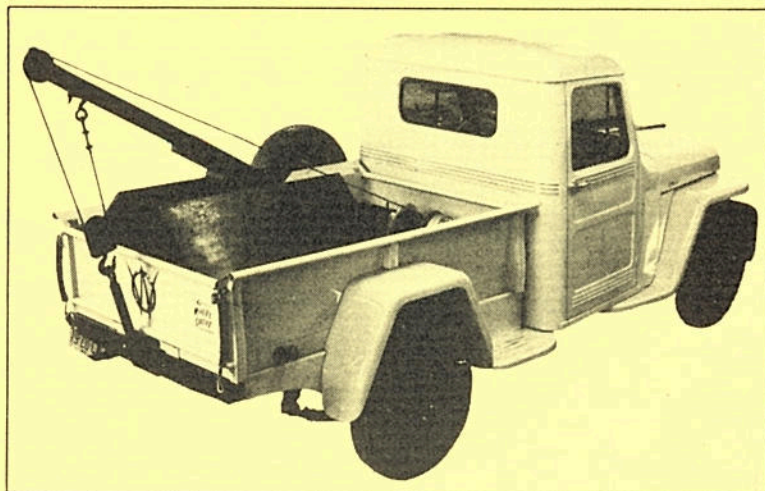
An excellent piece of equipment for loading and hoisting, and a very serviceable light duty wrecker can be built around this winch application.

Drum holds 150 ft. of 5/16" cable with ample working room. Winch in frame weighs only 76 lbs. As special winch frame and other parts are made to fit the truck, installation is very easy and inexpensive.

# Ramsey Winch Mfg. Co.

Box 3035  
Tulsa 8, Okla





**MAKE YOUR 4WD  
TRUCK A WRECKER**  
*at less than  
**HALF** the cost  
of other wreckers*

The Canfield folding wrecker, engineered by Canfield, illustrated here, has been designed specifically for the Willys Jeep or the Willys one-ton pickup. It converts your pickup into a full-fledged wrecker whenever the need arises, yet does not impair the general utility of your pickup for other purposes. The portable feature of the Canfield wrecker, permits its folding into the floor of your pickup when not in use. A sturdy floor of  $\frac{3}{4}$ -inch 5 ply marine glued plywood, which is hinged in sections, provides an overall level floor above the folding wrecker which is equally as strong and just as serviceable as the actual floor of the pickup body. Consequently you have a pickup of approximately the

same usable floor space as prior to Wrecker installation and by all odds far greater utility. In less than sixty seconds time, one person can convert your pickup to a wrecker, or back into a pickup. This conversion feature makes your pickup a 24-hour-a-day money-maker without tying it up permanently as a specialized vehicle. When the need for a wrecker arises, your pickup will be capable of picking up and towing any type of passenger car. The Canfield wrecker has been installed in hundreds of jeeps throughout the world and its record of performance to date can be verified by the flood of enthusiastic letters praising its virtues. (Copies of these letters will be sent on request).



The illustration at the top of the page shows a Canfield folding wrecker installed on a Willys-Overland 4WD Truck. The tow-rig is extended and ready for use. The hinged sections of the false plywood floor are open. In sixty seconds this pickup has been converted into a full-fledged wrecker capable of towing any passenger car.

At the left is illustrated the same Willys-Overland 4WD Truck with the Canfield folding wrecker folded and stowed on the floor of the pickup body. The hinged sections of the false floor have been lowered over the tow-rig providing an over-all level floor area, thus reconverting the wrecker—in a very few seconds—into its utility role as a handy pickup. This multi-purpose vehicle, created by the installation of a Canfield folding wrecker, is an investment that brings large returns.

**MANUFACTURED BY  
CANFIELD TOW-BAR CO., INC.**  
for any  
**WILLYS 'JEEP' OR WILLYS  
1-TON PICK-UP**



# READY FOR ACTION

with TAKE-OFF POWERED UNIT

- Entire Wrecker Unit Folds Into 6 Inches of Space Above Floor When Stowed

## EASY AS ABC TO INSTALL

Complete installation drawings and instructions are shipped with each Canfield folding wrecker. Two mechanics with ordinary tools can install this wrecker in any jeep—one-ton Willys vehicle in approximately 2 hours. When ordering, please specify whether wrecker designed for jeep, one-ton pickup is desired.

Boom extension for loading heavy objects or removing motors where chain falls is not available.

## JEEP UNIT

## HELPER SPRINGS

These helper springs are attached permanently to the rear axle housing. The bearing brackets are likewise attached permanently to the frame of your pickup. They eliminate the possibility of damage to rear springs while towing heavy vehicles or carrying unusual loads. These helper springs, incidentally, increase the load potential of your regular pickup.

## WINCH TAKE-OFF POWERED

Here at last is a whiz of a power take-off that completely answers all the requirements for complete control and easy handling. The tremendous power of the gear ratio can easily lift any passenger car, as well as drag cars from ditches.

The Canfield folding wrecker is shipped complete with all necessary accessories—including helper springs and frame brackets for the rear axle. The outline illustration on this page shows the Canfield wrecker extended ready for use. The complete wrecker, packed ready for shipment, weighs 650 pounds. The Canfield folding wrecker is scientifically engineered by Canfield and is designed so that the entire load is properly distributed and is borne by the frame of the pickup. No frame reinforcing is necessary. The outboard brackets for the helper springs, are attached to the frame forward of the rear axle, and do not in any way weaken the frame assembly.

**CANFIELD TOW-BAR COMPANY, INC.**  
**6033 EAST McNICHOLS RD., DETROIT, MICH.**